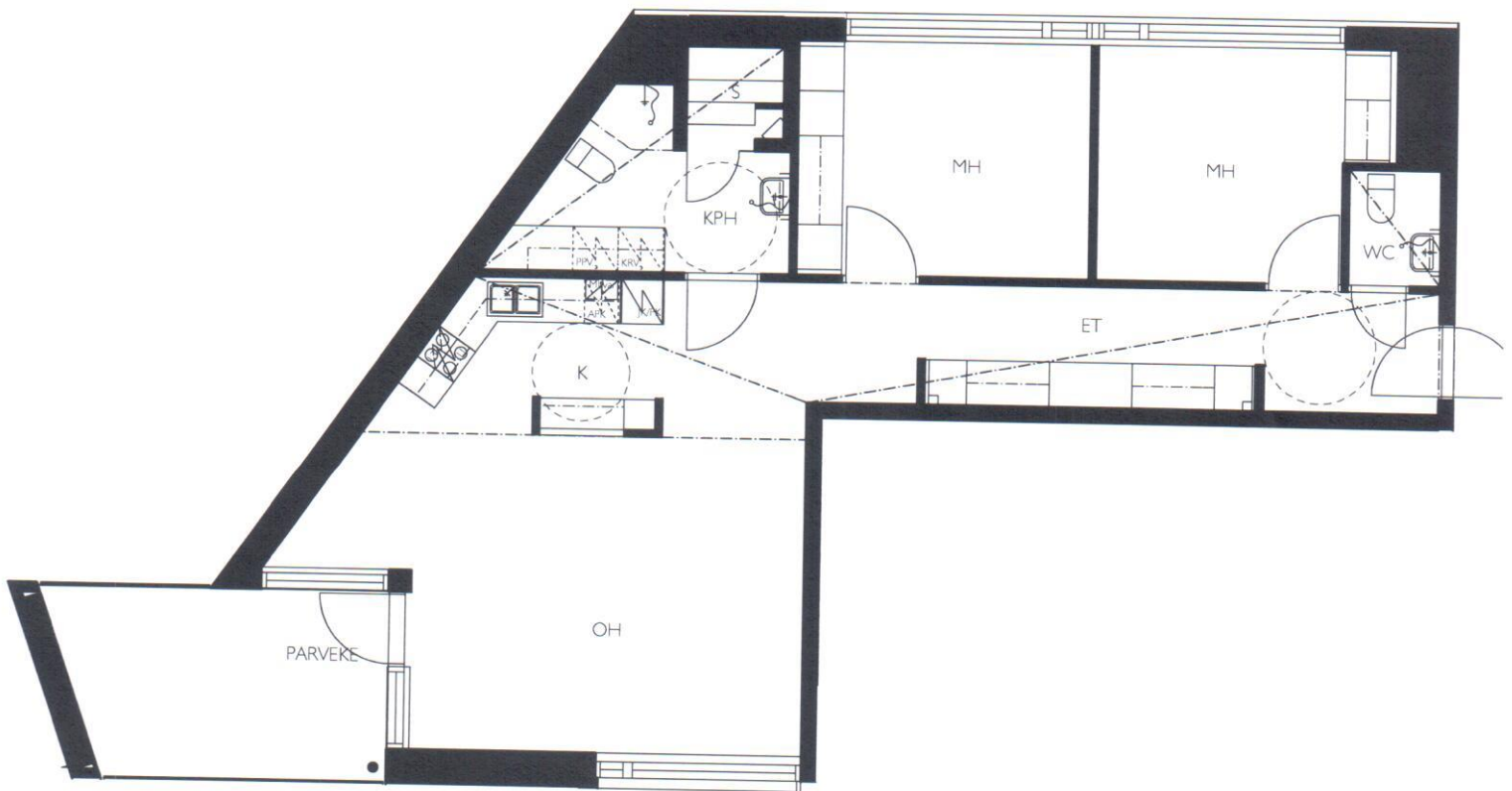
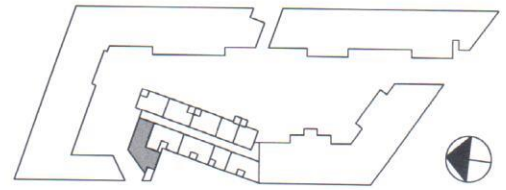




- ASUNNOT: B 073, 2. KERROS
 B 083, 3. KERROS
 B 093, 4. KERROS
 B 103, 5. KERROS
 B 113, 6. KERROS



KOTIKORTTELI KALASATAMA

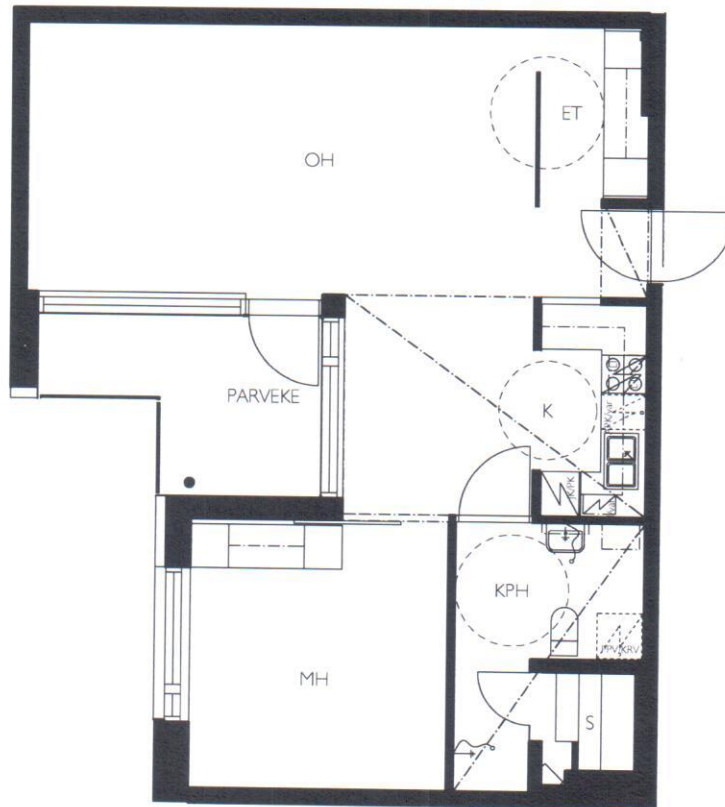
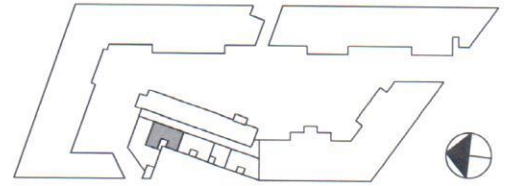
3H+K+S+PARVEKE 86 m²



06.03.2012



ASUNNOT: B 074, 2. KERROS

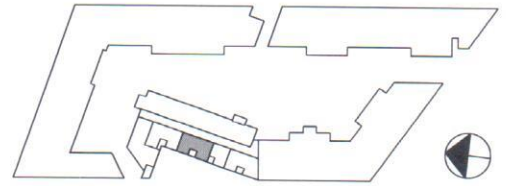


KOTIKORTTELI KALASATAMA

2H+K+S+PARVEKE 63 m²



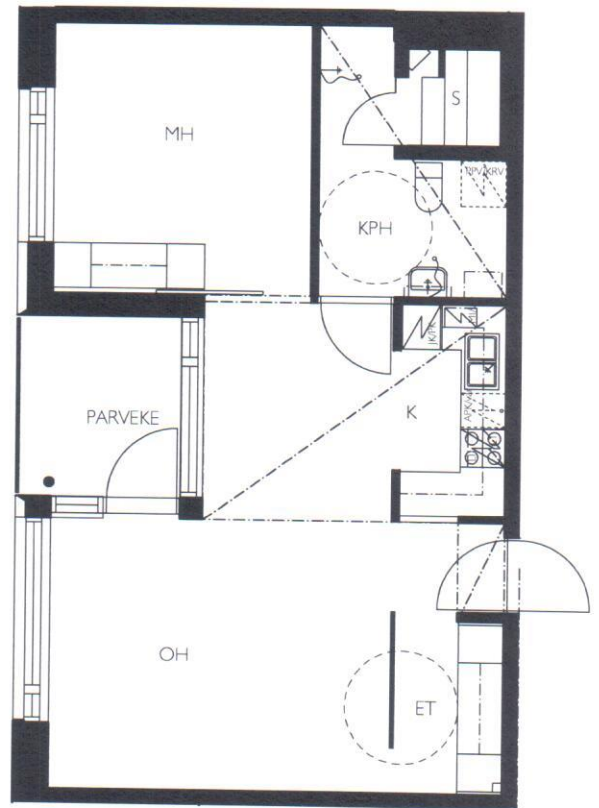
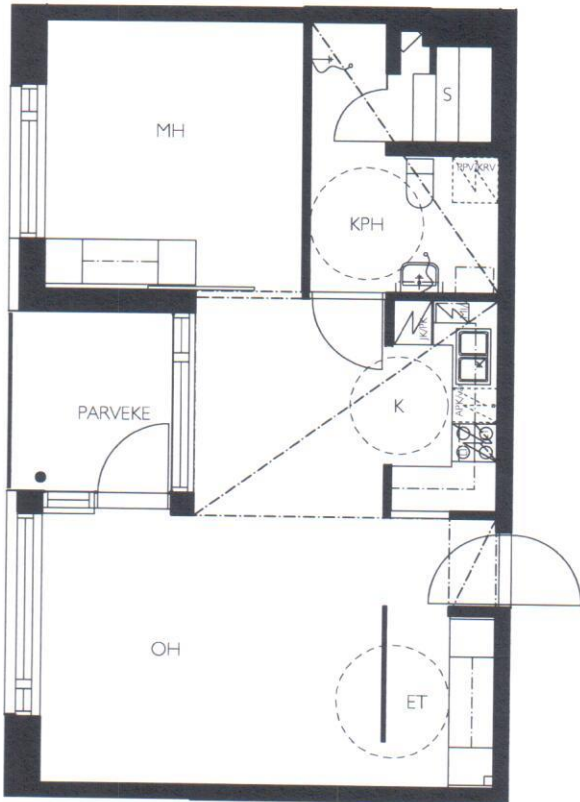
06.03.2012



ASUNNOT: B 075, 2. KERROS

ASUNNOT: B 085, 3. KERROS

B 095, 4. KERROS



KOTIKORTTELI KALASATAMA

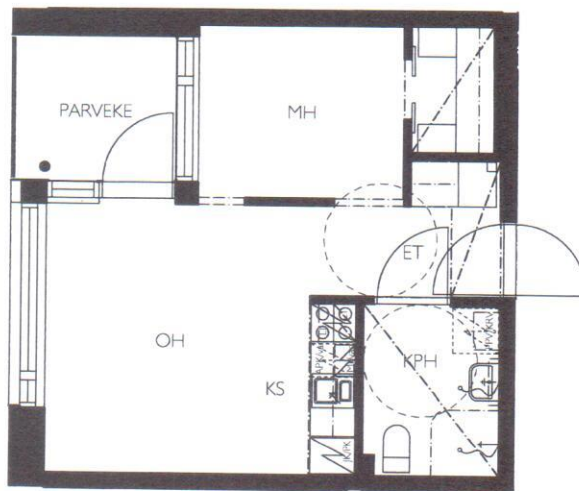
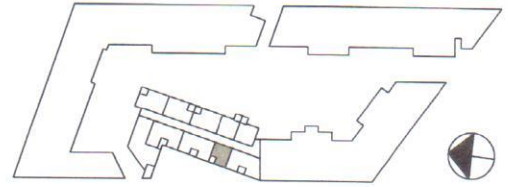
2H+K+S+PARVEKE 55 m²



06.03.2012



ASUNNOT: B 076, 2. KERROS
 B 086, 3. KERROS
 B 096, 4. KERROS
 B 106, 5. KERROS
 B 116, 6. KERROS



KOTIKORTTELI KALASATAMA

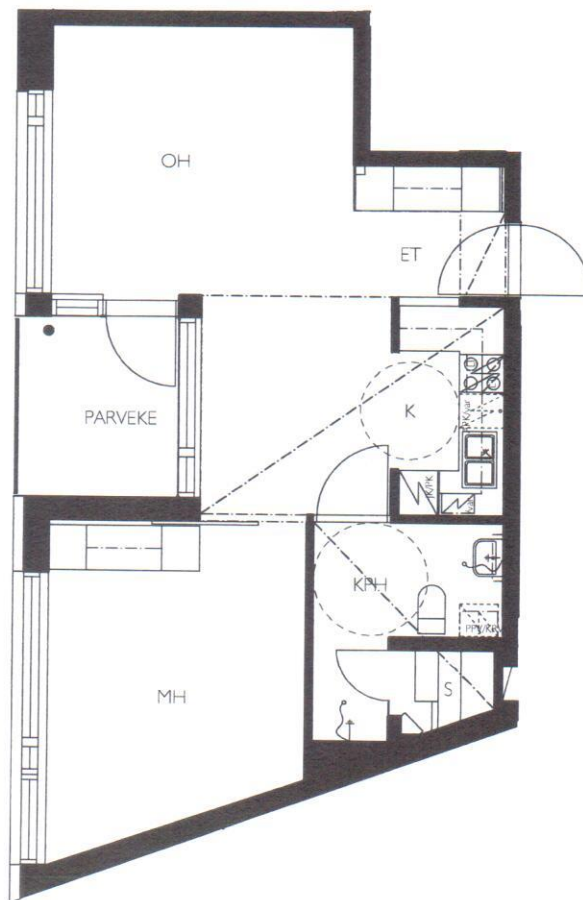
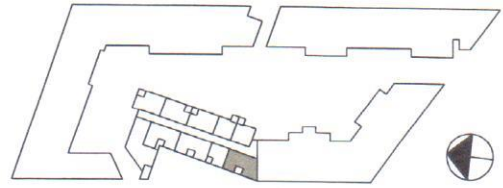
2H+KS+PARVEKE 31 m²



06.03.2012



ASUNNOT: B 077, 2. KERROS
 B 087, 3. KERROS
 B 097, 4. KERROS
 B 107, 5. KERROS
 B 117, 6. KERROS

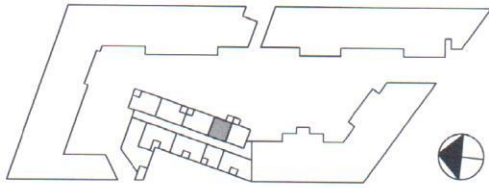


KOTIKORTTELI KALASATAMA

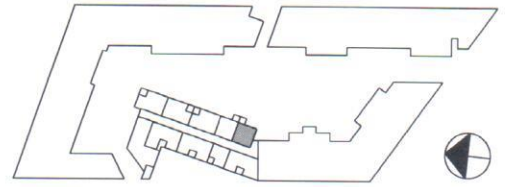
2H+K+S+PARVEKE 51.5 m²



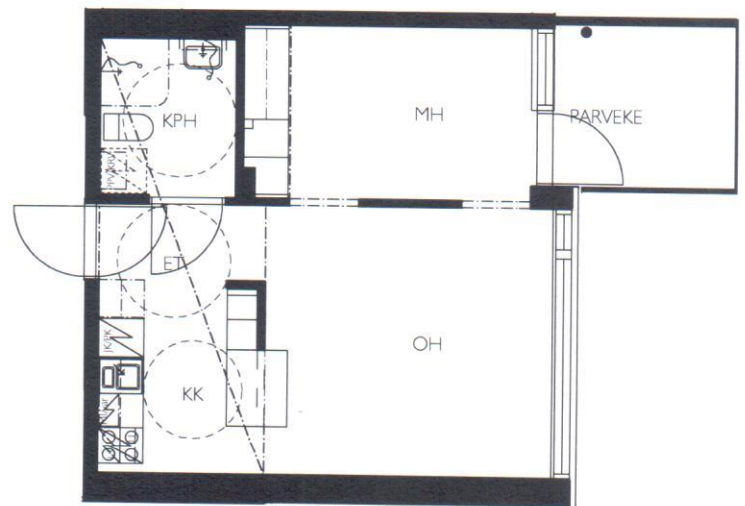
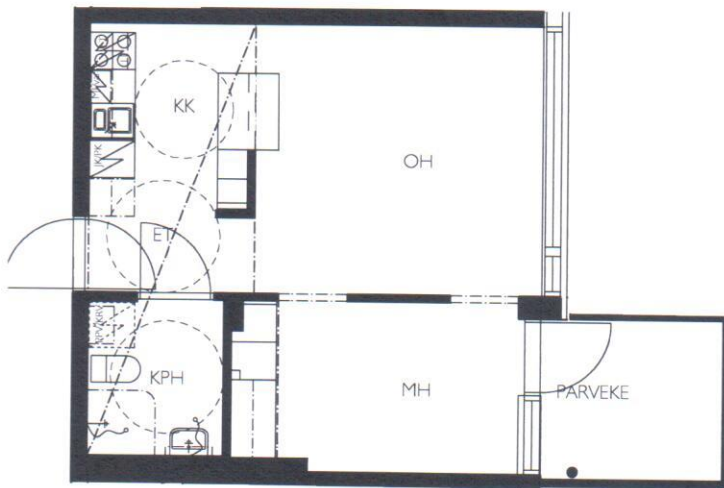
06.03.2012



ASUNNOT: B 079, 3. KERROS
 B 089, 4. KERROS
 B 099, 5. KERROS
 B 109, 6. KERROS



ASUNNOT: B 078, 3. KERROS
 B 088, 4. KERROS
 B 098, 5. KERROS
 B 108, 6. KERROS

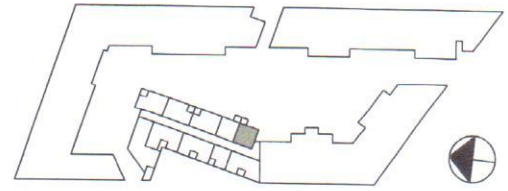
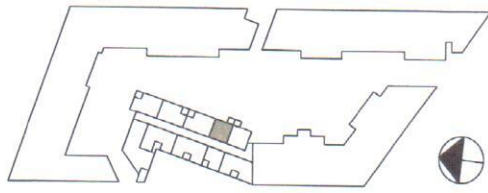


KOTIKORTTELI KALASATAMA

2H+KK+PARVEKE 35 m²

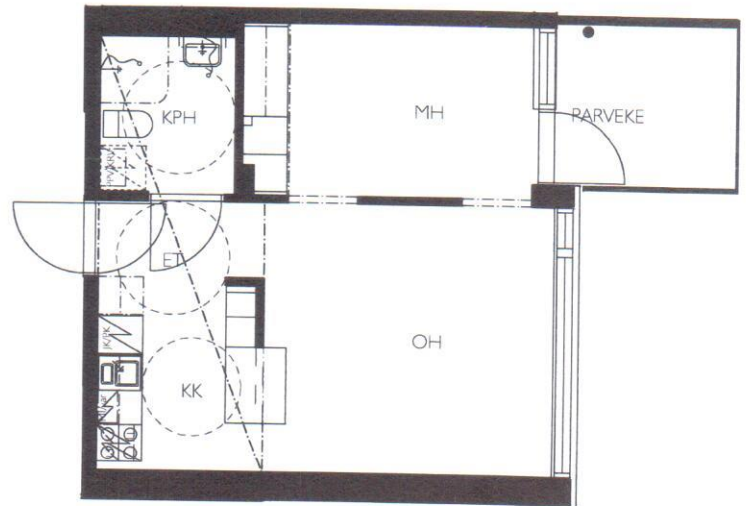
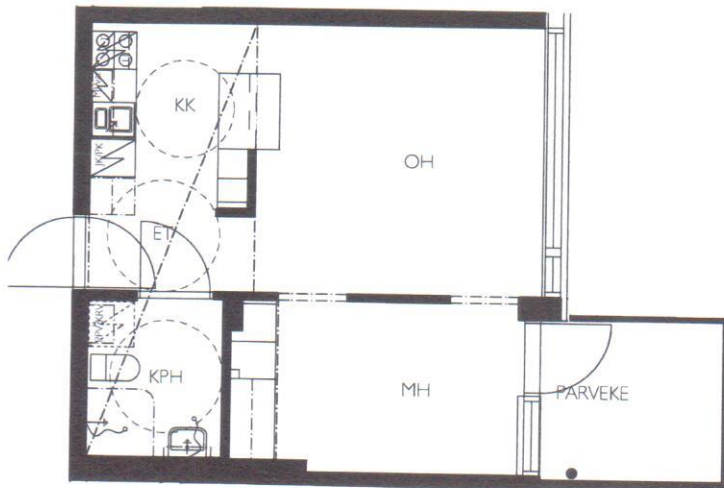


06.03.2012



ASUNNOT: B 079, 3. KERROS
 B 089, 4. KERROS
 B 099, 5. KERROS
 B 109, 6. KERROS

ASUNNOT: B 078, 3. KERROS
 B 088, 4. KERROS
 B 098, 5. KERROS
 B 108, 6. KERROS

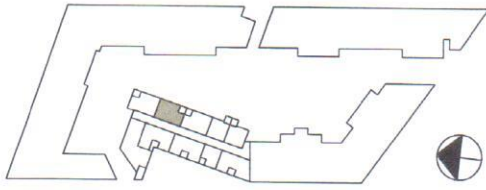


KOTIKORTTELI KALASATAMA

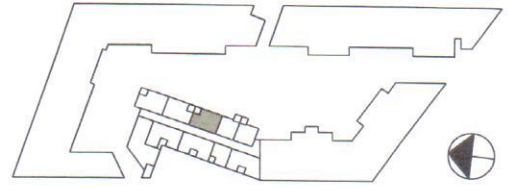
2H+KK+PARVEKE 35 m²



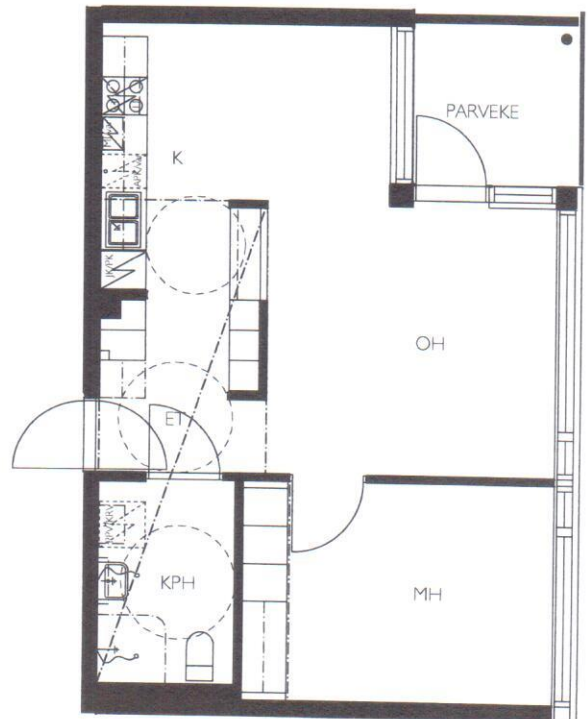
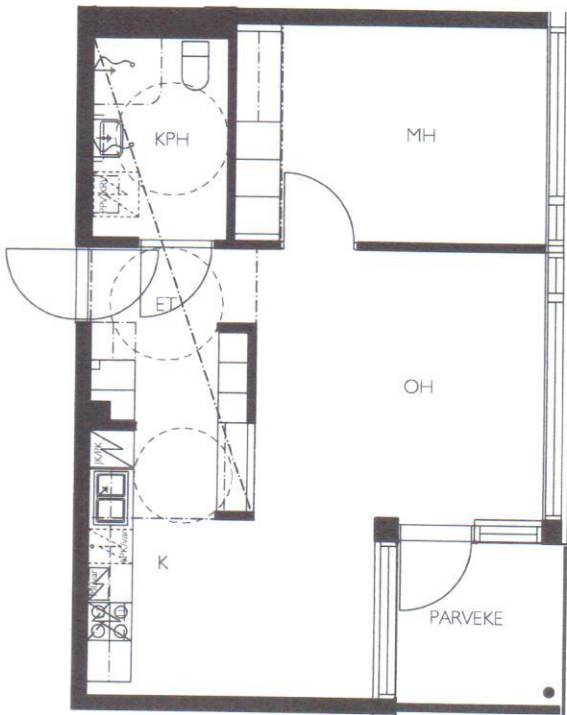
06.03.2012



ASUNNOT: B 081, 3. KERROS
 B 091, 4. KERROS
 B 101, 5. KERROS
 B 111, 6. KERROS



ASUNNOT: B 080, 3. KERROS
 B 090, 4. KERROS
 B 100, 5. KERROS
 B 110, 6. KERROS

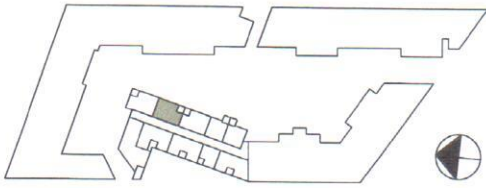


KOTIKORTTELI KALASATAMA

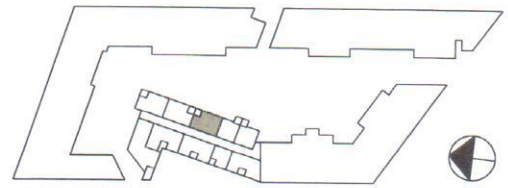
2H+K+PARVEKE 48.5 m²



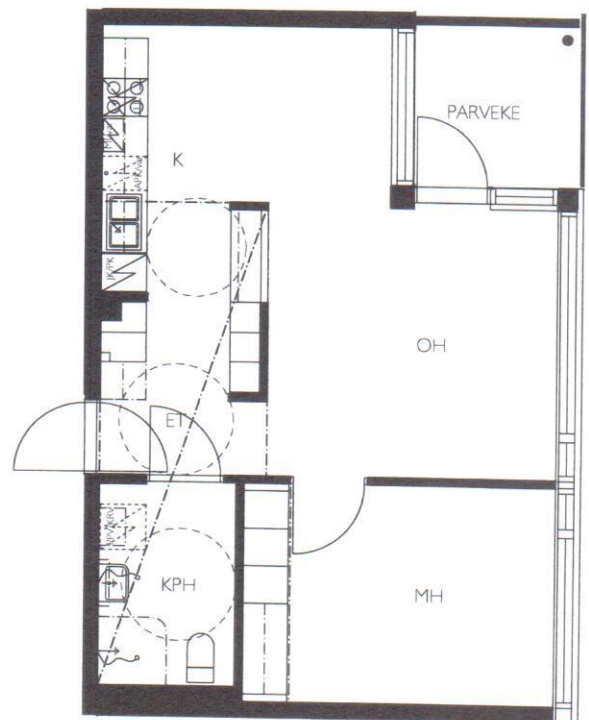
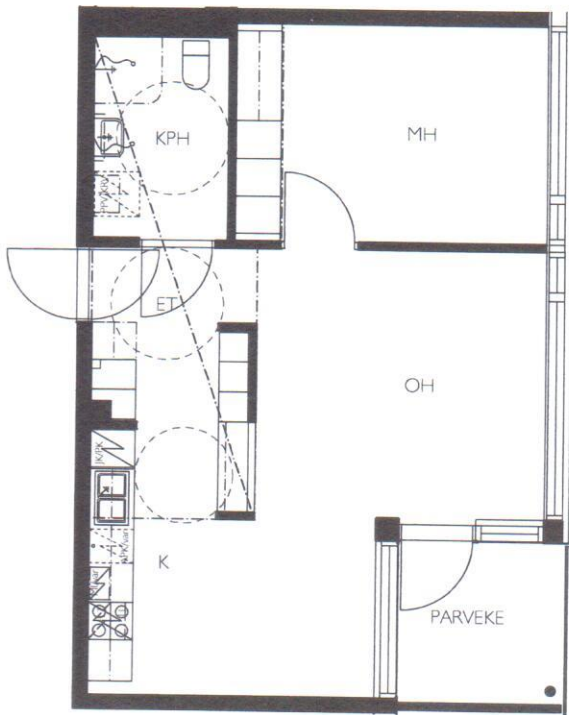
06.03.2012



ASUNNOT: B 081, 3. KERROS
 B 091, 4. KERROS
 B 101, 5. KERROS
 B 111, 6. KERROS



ASUNNOT: B 080, 3. KERROS
 B 090, 4. KERROS
 B 100, 5. KERROS
 B 110, 6. KERROS



KOTIKORTTELI KALASATAMA

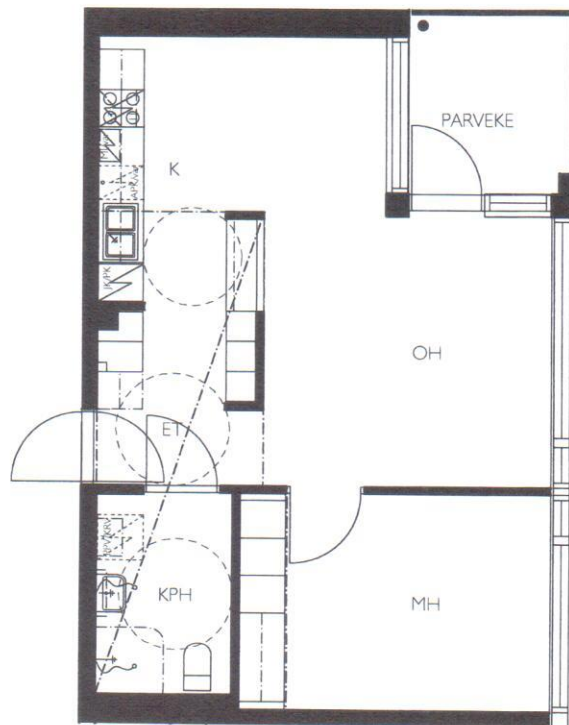
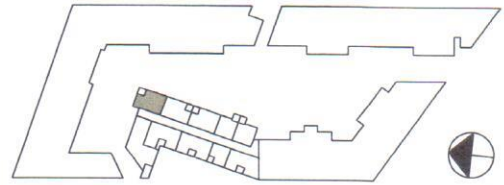
2H+K+PARVEKE 48.5 m²



06.03.2012



ASUNNOT: B 082, 3. KERROS
B 092, 4. KERROS
B 102, 5. KERROS
B 112, 6. KERROS



KOTIKORTTELI KALASATAMA

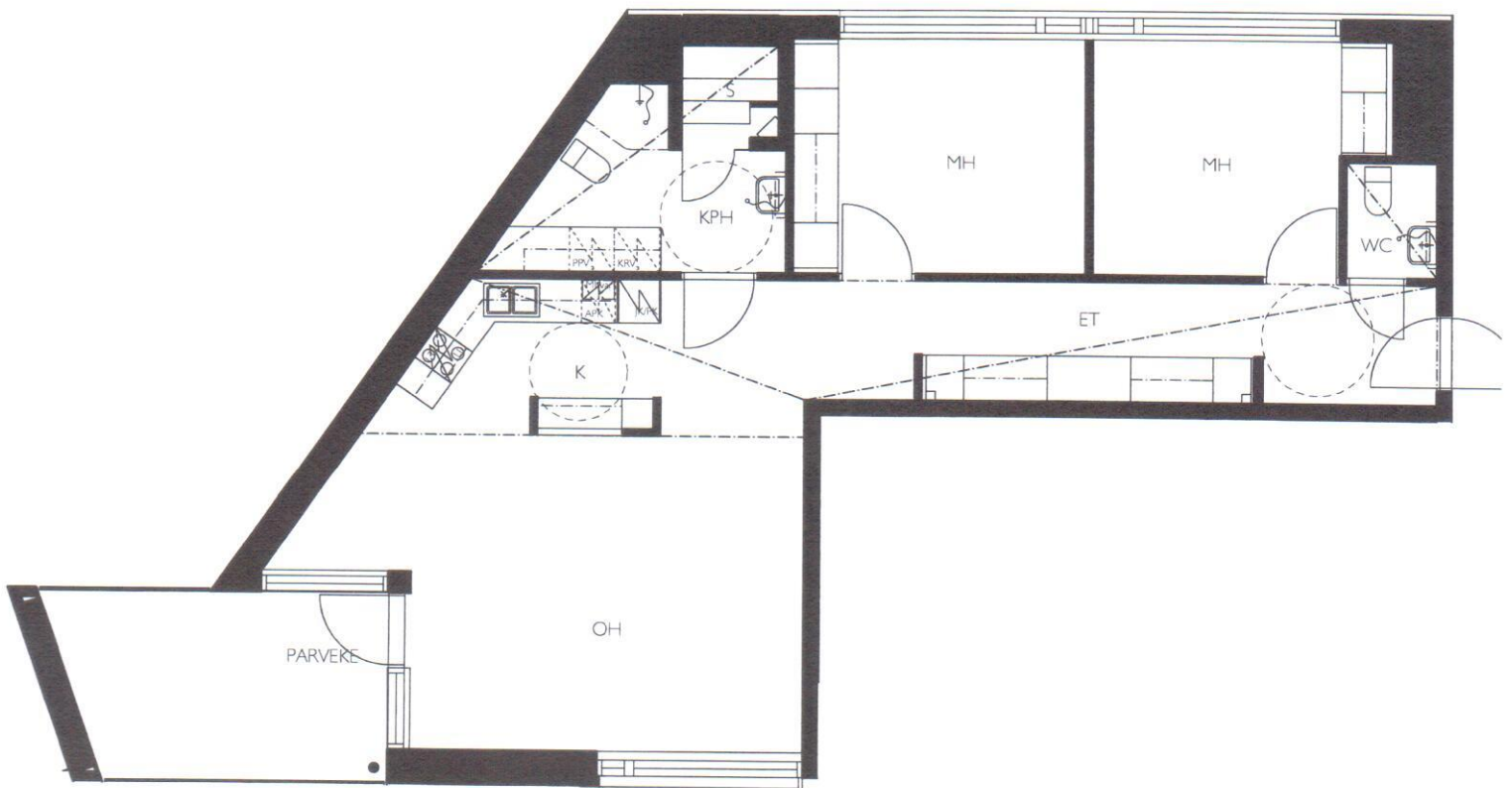
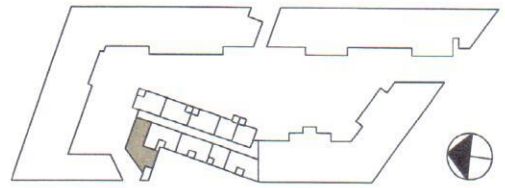
2H+K+PARVEKE 48.5 m²



06.03.2012



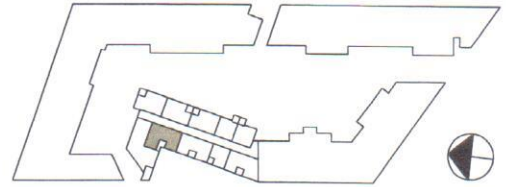
ASUNNOT: B 073, 2. KERROS
 B 083, 3. KERROS
 B 093, 4. KERROS
 B 103, 5. KERROS
 B 113, 6. KERROS



KOTIKORTTELI KALASATAMA

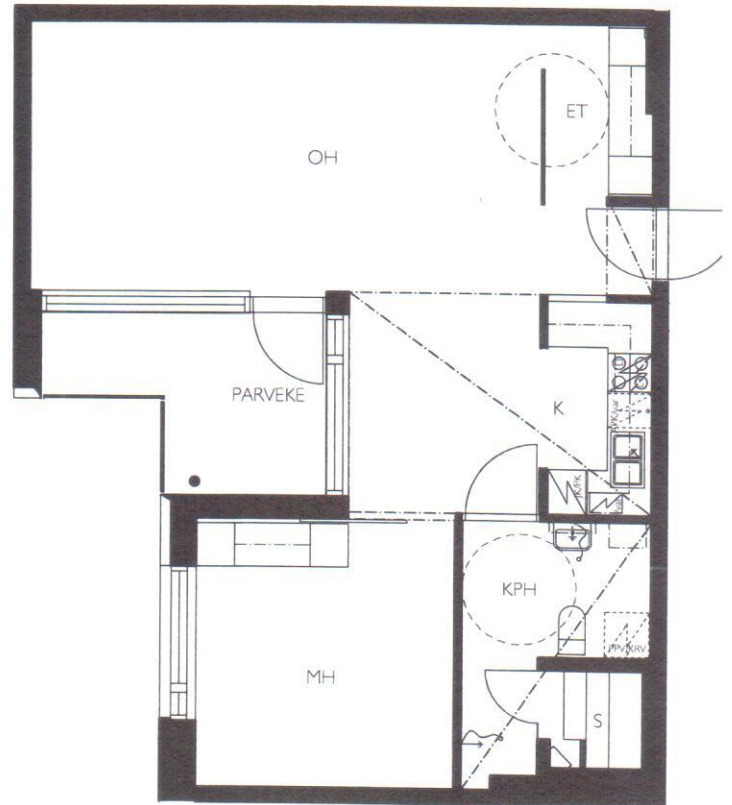
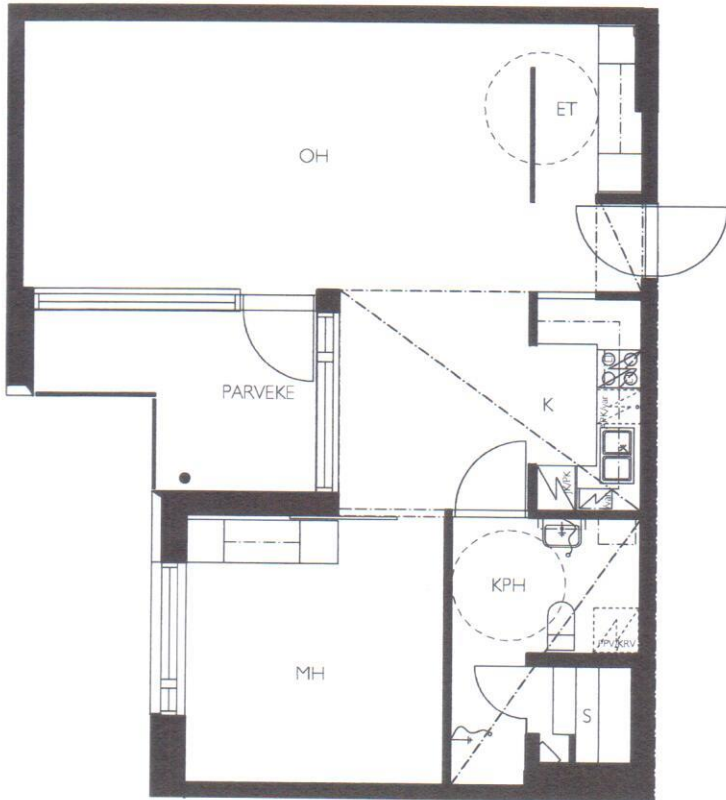
3H+K+S+PARVEKE 86 m²

06.03.2012



ASUNNOT: B 084, 3. KERROS
B 094, 4. KERROS

ASUNNOT: B 104, 5. KERROS
B 114, 6. KERROS

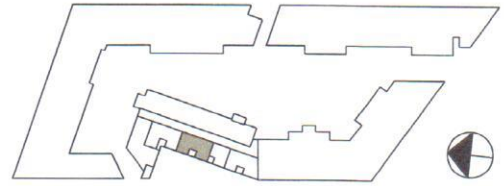


KOTIKORTTELI KALASATAMA

2H+K+S+PARVEKE 62.5 m²



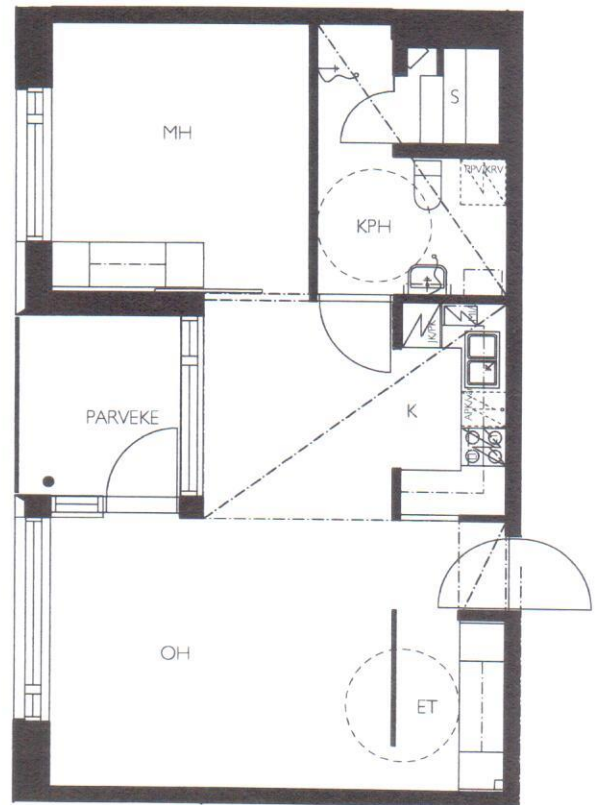
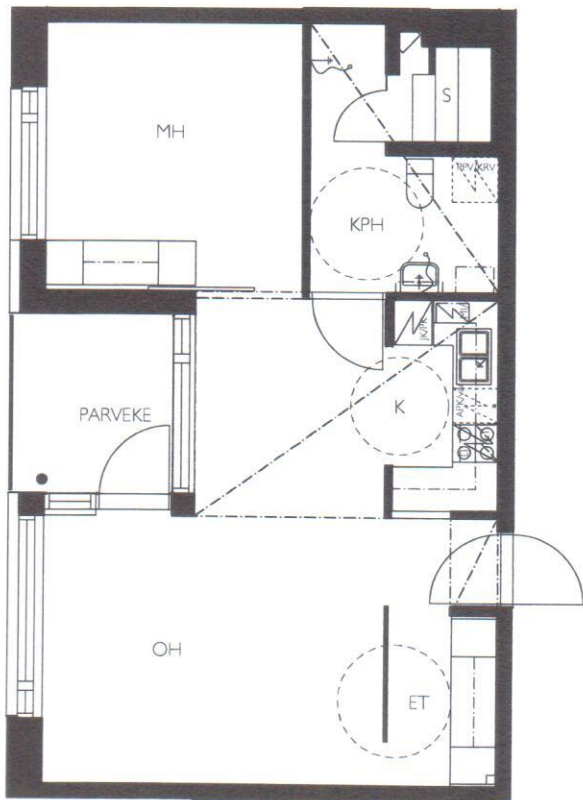
06.03.2012



ASUNNOT: B 075, 2. KERROS

ASUNNOT: B 085, 3. KERROS

B 095, 4. KERROS



KOTIKORTTELI KALASATAMA

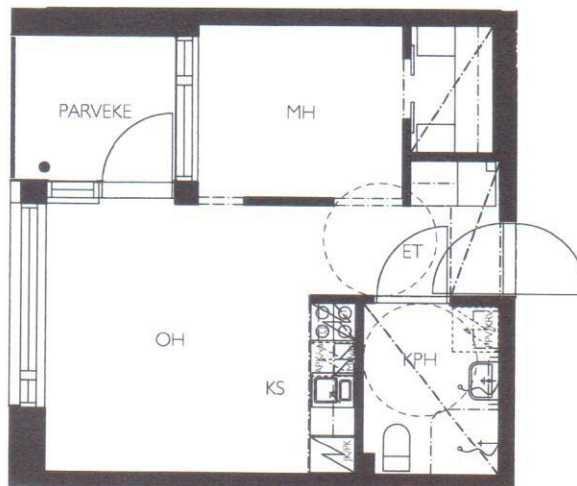
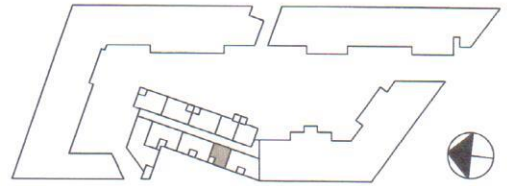
2H+K+S+PARVEKE 55 m²



06.03.2012



ASUNNOT: B 076, 2. KERROS
 B 086, 3. KERROS
 B 096, 4. KERROS
 B 106, 5. KERROS
 B 116, 6. KERROS



KOTIKORTTELI KALASATAMA

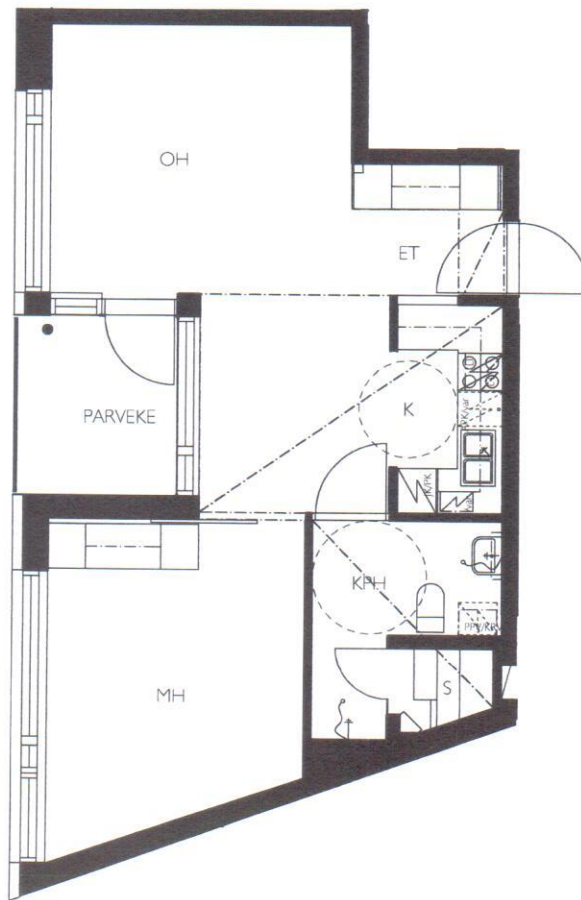
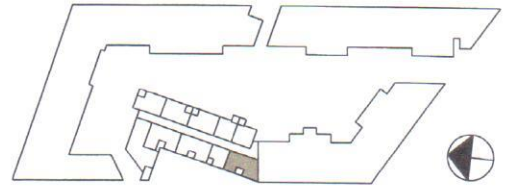
2H+KS+PARVEKE 31 m²



06.03.2012



ASUNNOT: B 077, 2. KERROS
 B 087, 3. KERROS
 B 097, 4. KERROS
 B 107, 5. KERROS
 B 117, 6. KERROS

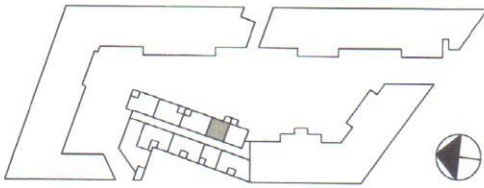


KOTIKORTTELI KALASATAMA

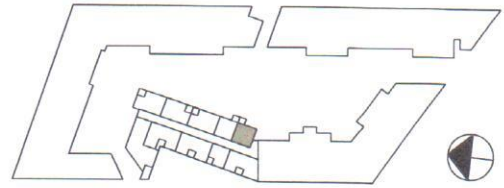
2H+K+S+PARVEKE 51.5 m²



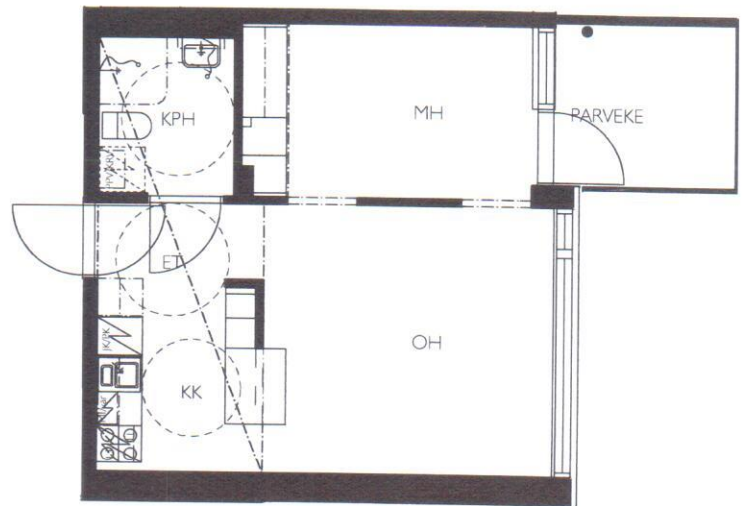
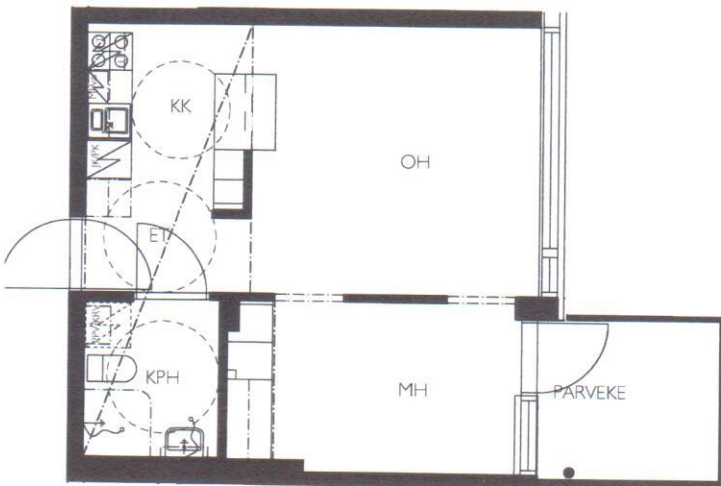
06.03.2012



ASUNNOT: B 079, 3. KERROS
 B 089, 4. KERROS
 B 099, 5. KERROS
 B 109, 6. KERROS



ASUNNOT: B 078, 3. KERROS
 B 088, 4. KERROS
 B 098, 5. KERROS
 B 108, 6. KERROS

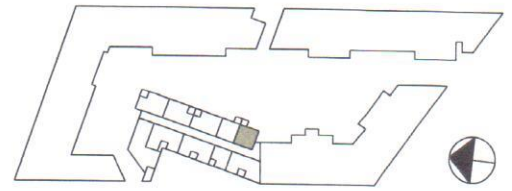
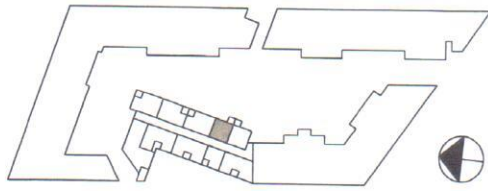


KOTIKORTTELI KALASATAMA

2H+KK+PARVEKE 35 m²

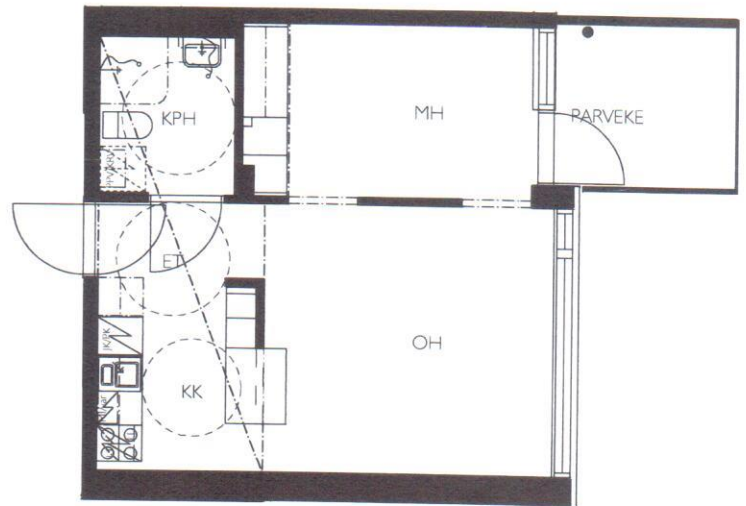
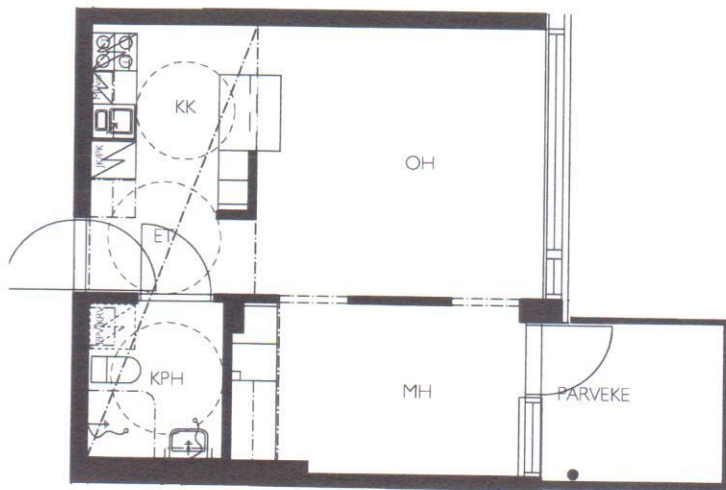


06.03.2012



ASUNNOT: B 079, 3. KERROS
 B 089, 4. KERROS
 B 099, 5. KERROS
 B 109, 6. KERROS

ASUNNOT: B 078, 3. KERROS
 B 088, 4. KERROS
 B 098, 5. KERROS
 B 108, 6. KERROS

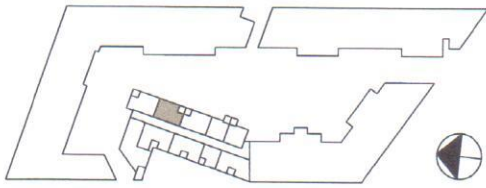


KOTIKORTTELI KALASATAMA

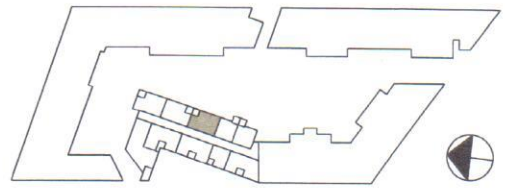
2H+KK+PARVEKE 35 m²



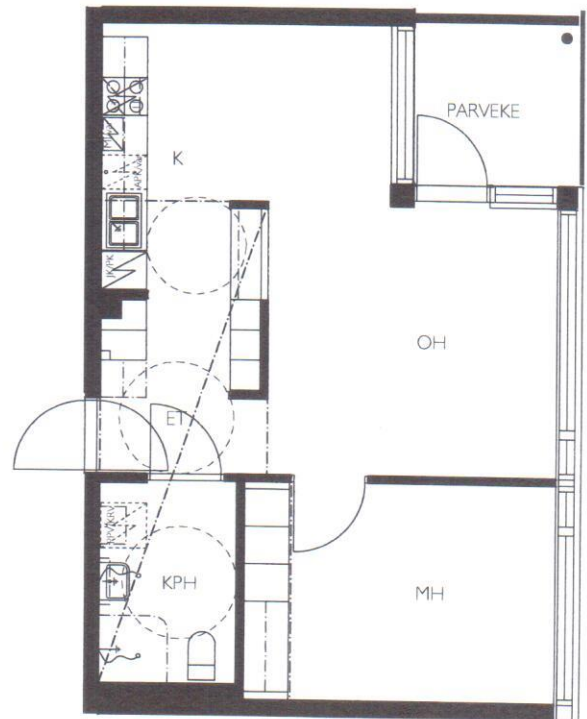
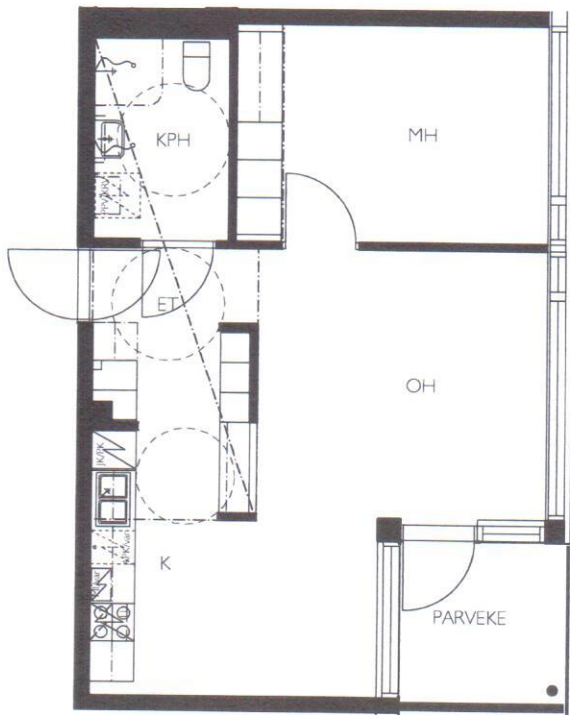
06.03.2012



ASUNNOT: B 081, 3. KERROS
 B 091, 4. KERROS
 B 101, 5. KERROS
 B 111, 6. KERROS



ASUNNOT: B 080, 3. KERROS
 B 090, 4. KERROS
 B 100, 5. KERROS
 B 110, 6. KERROS

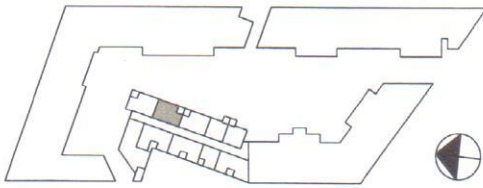


KOTIKORTTELI KALASATAMA

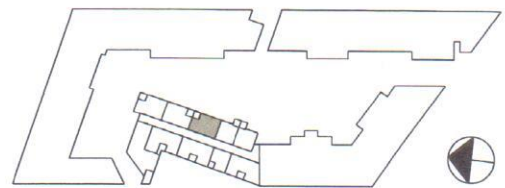
2H+K+PARVEKE 48.5 m²



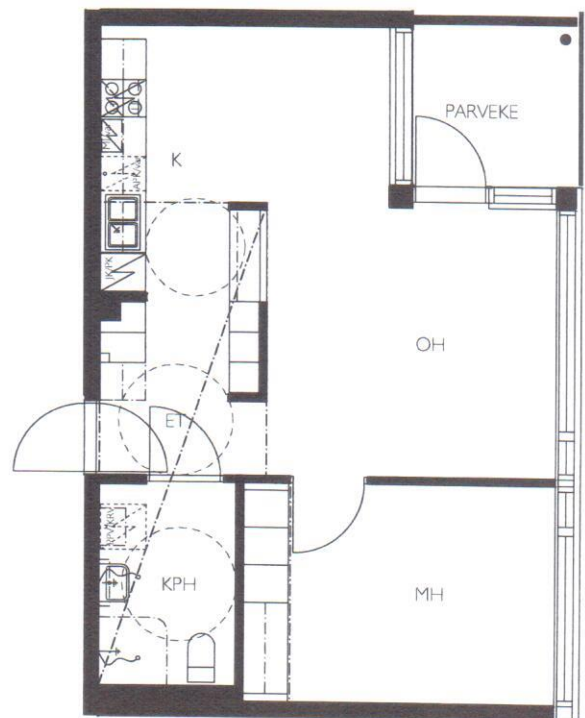
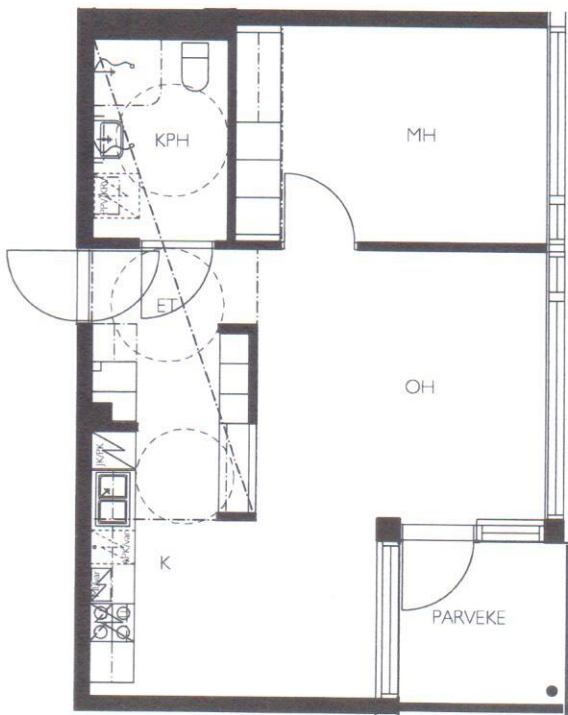
06.03.2012



ASUNNOT: B 081, 3. KERROS
 B 091, 4. KERROS
 B 101, 5. KERROS
 B 111, 6. KERROS



ASUNNOT: B 080, 3. KERROS
 B 090, 4. KERROS
 B 100, 5. KERROS
 B 110, 6. KERROS



KOTIKORTTELI KALASATAMA

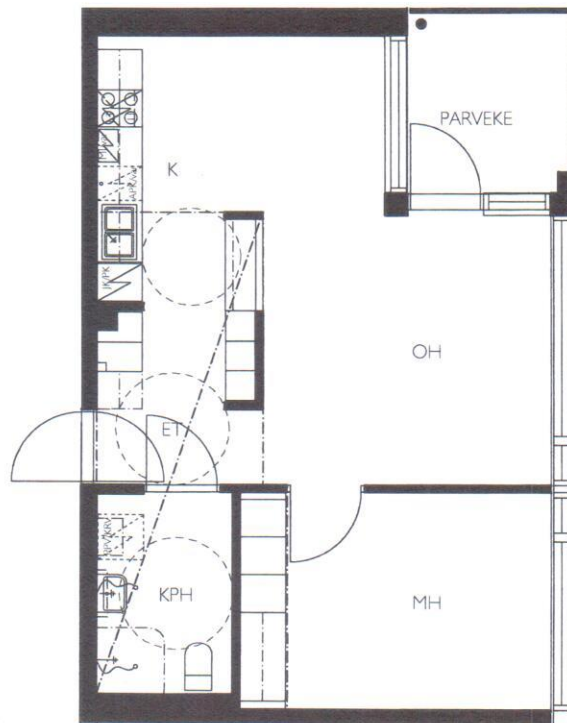
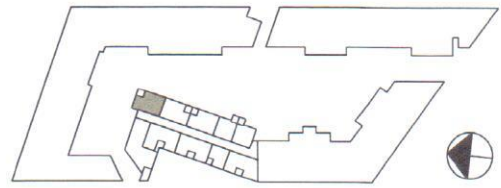
2H+K+PARVEKE 48.5 m²



06.03.2012



ASUNNOT: B 082, 3. KERROS
 B 092, 4. KERROS
 B 102, 5. KERROS
 B 112, 6. KERROS



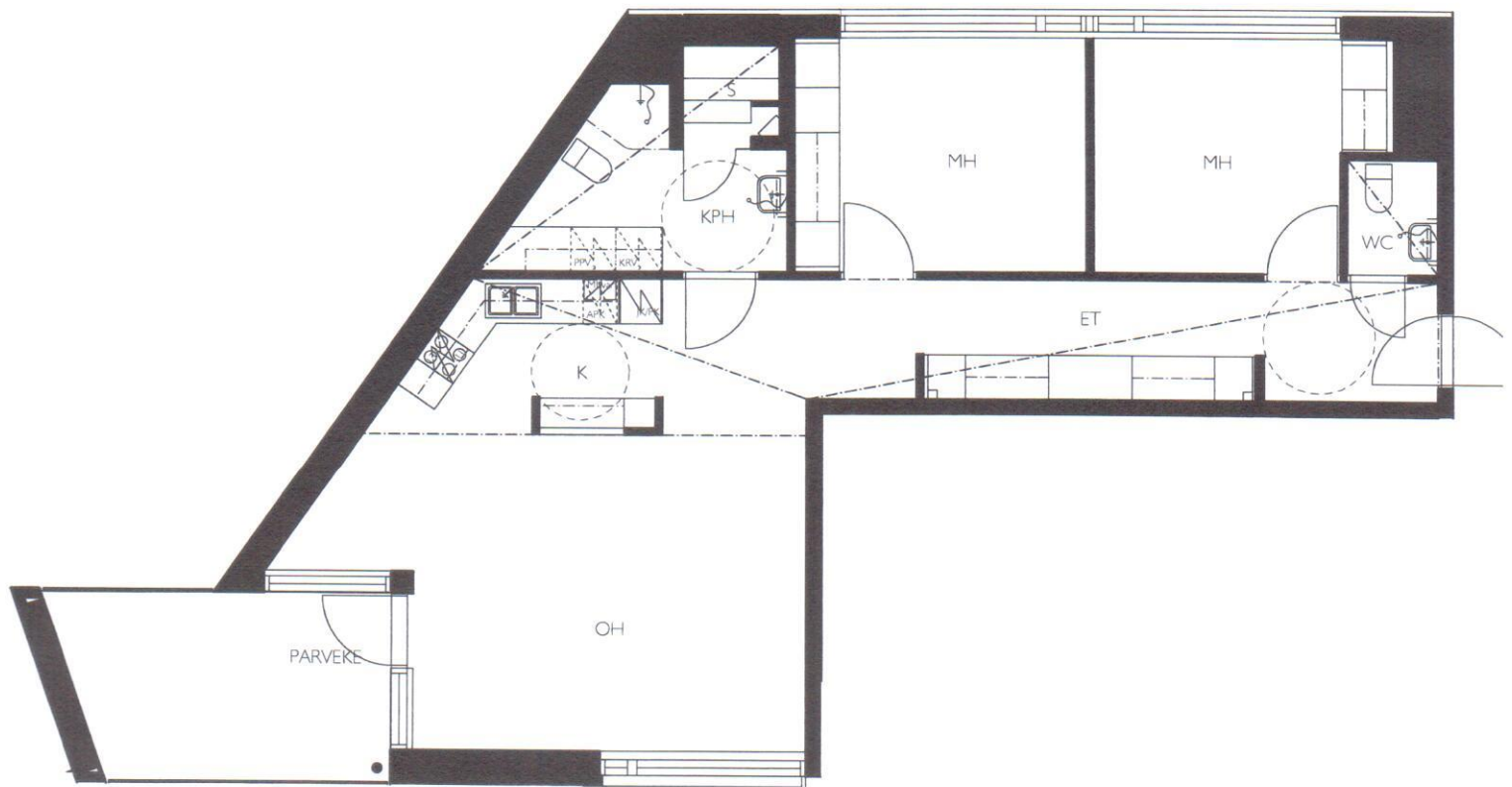
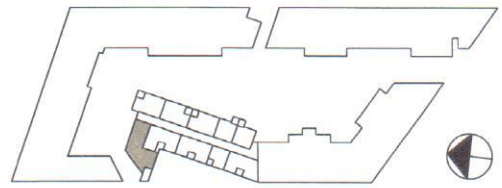
KOTIKORTTELI KALASATAMA

2H+K+PARVEKE 48.5 m²

06.03.2012



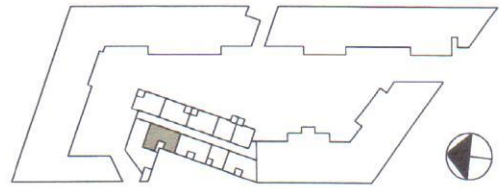
ASUNNOT: B 073, 2. KERROS
 B 083, 3. KERROS
 B 093, 4. KERROS
 B 103, 5. KERROS
 B 113, 6. KERROS



KOTIKORTTELI KALASATAMA

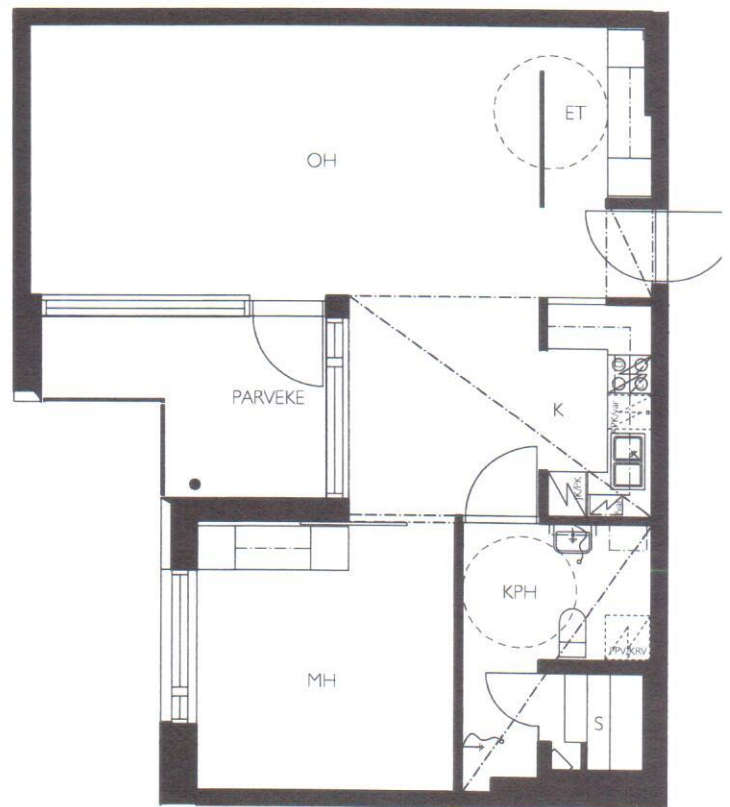
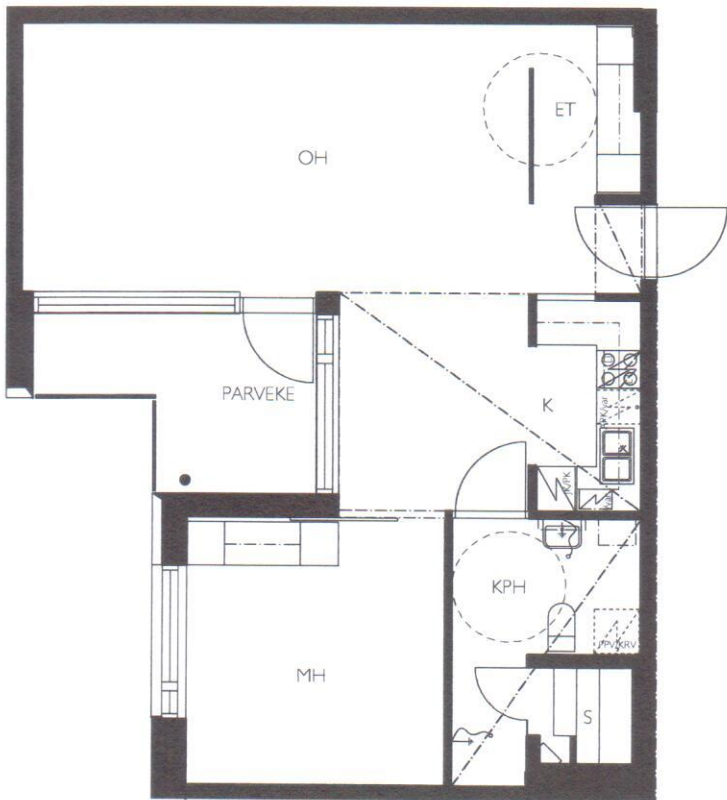
3H+K+S+PARVEKE 86 m²

06.03.2012



ASUNNOT: B 084, 3. KERROS
B 094, 4. KERROS

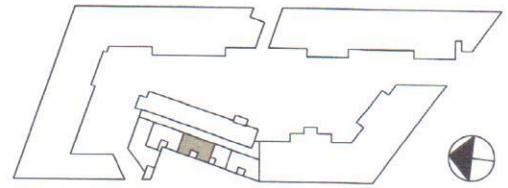
ASUNNOT: B 104, 5. KERROS
B 114, 6. KERROS



KOTIKORTTELI KALASATAMA

2H+K+S+PARVEKE 62.5 m²

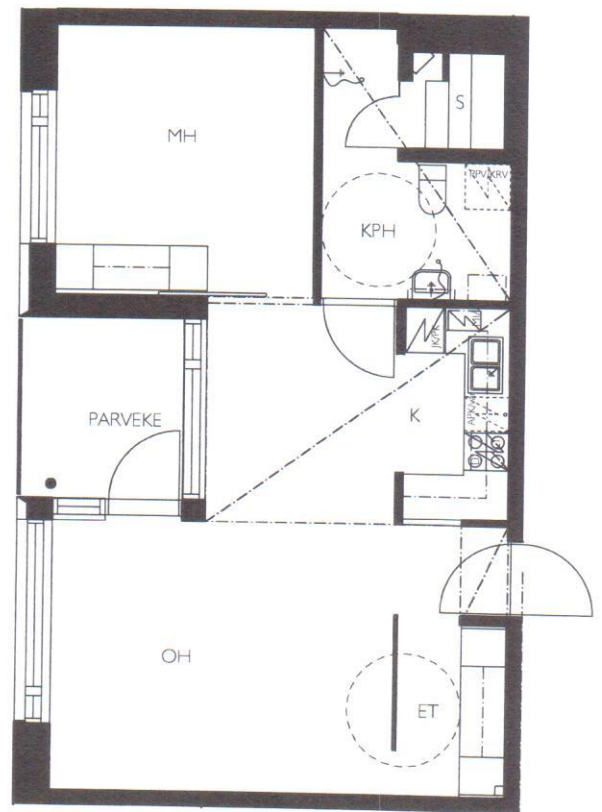
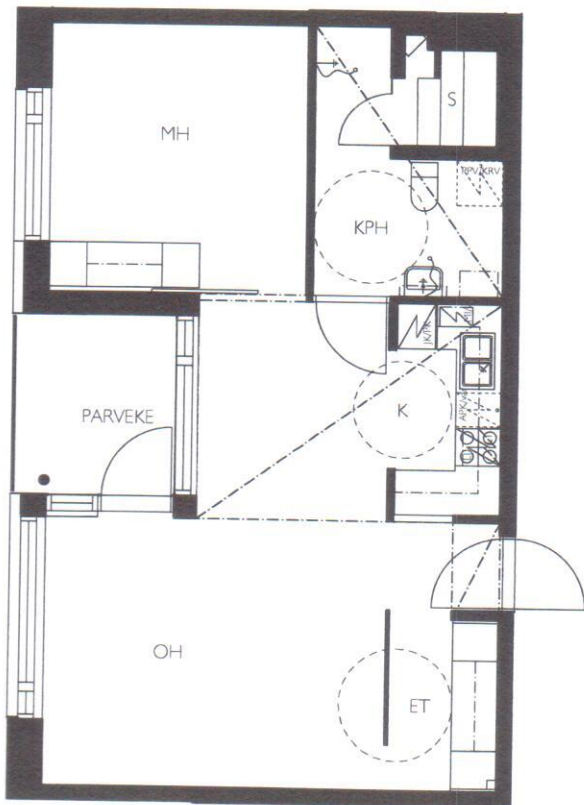
06.03.2012



ASUNNOT: B 075, 2. KERROS

ASUNNOT: B 085, 3. KERROS

B 095, 4. KERROS



KOTIKORTTELI KALASATAMA

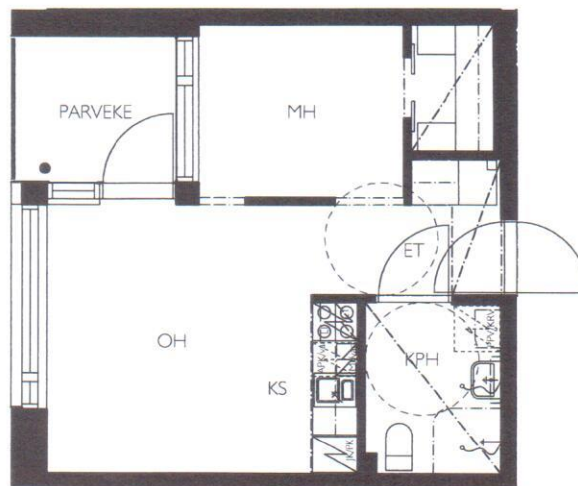
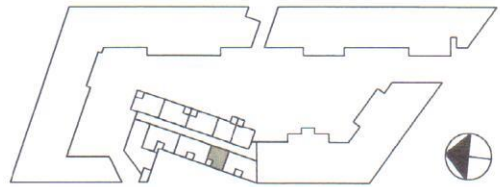
2H+K+S+PARVEKE 55 m²



06.03.2012



ASUNNOT: B 076, 2. KERROS
 B 086, 3. KERROS
 B 096, 4. KERROS
 B 106, 5. KERROS
 B 116, 6. KERROS



KOTIKORTTELI KALASATAMA

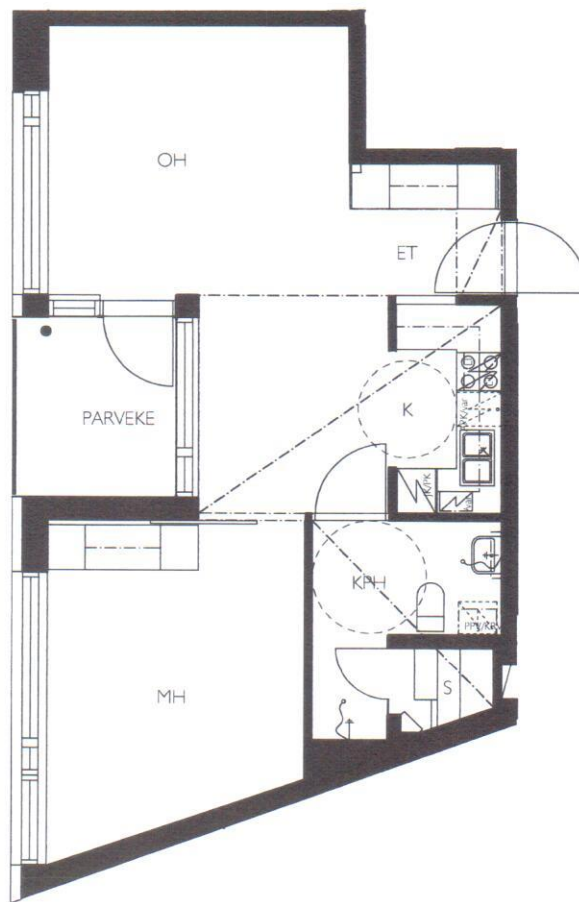
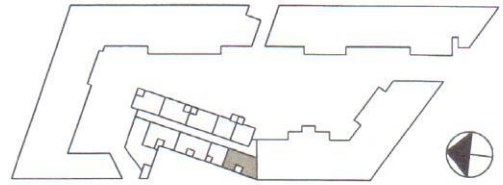
2H+KS+PARVEKE 31 m²



06.03.2012



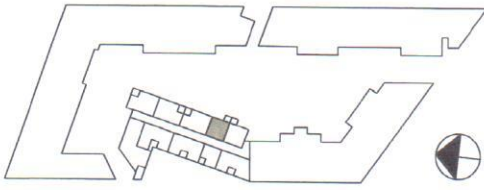
- ASUNNOT: B 077, 2. KERROS
 B 087, 3. KERROS
 B 097, 4. KERROS
 B 107, 5. KERROS
 B 117, 6. KERROS



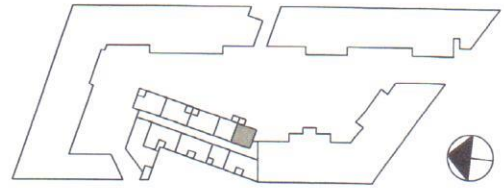
KOTIKORTTELI KALASATAMA

2H+K+S+PARVEKE 51.5 m²

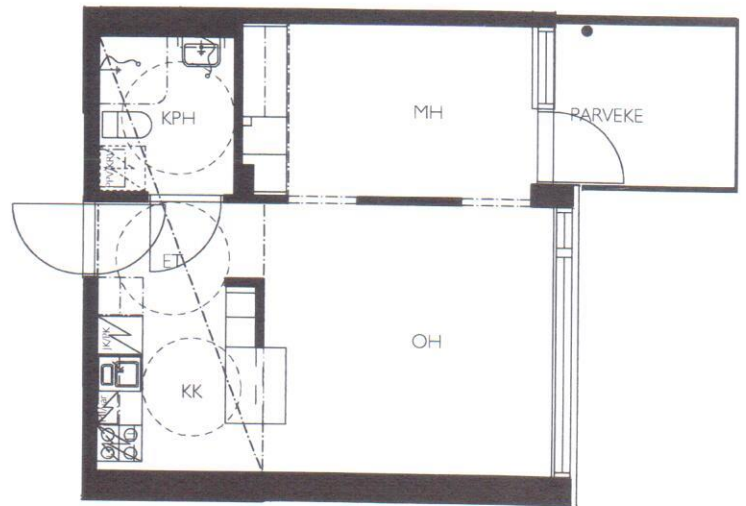
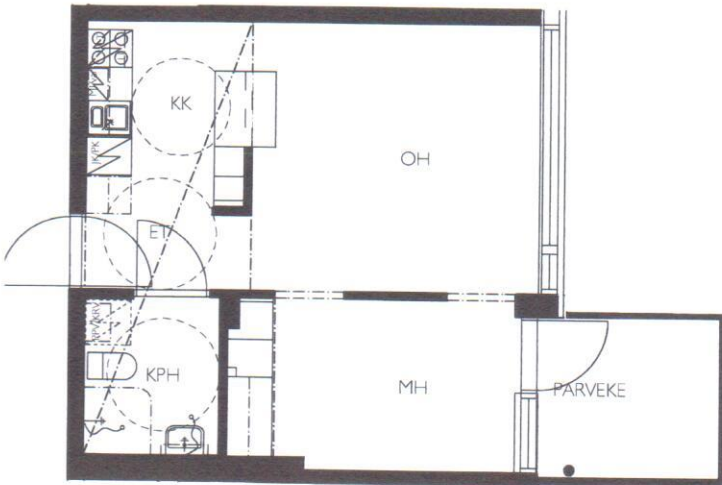
06.03.2012



ASUNNOT: B 079, 3. KERROS
 B 089, 4. KERROS
 B 099, 5. KERROS
 B 109, 6. KERROS



ASUNNOT: B 078, 3. KERROS
 B 088, 4. KERROS
 B 098, 5. KERROS
 B 108, 6. KERROS

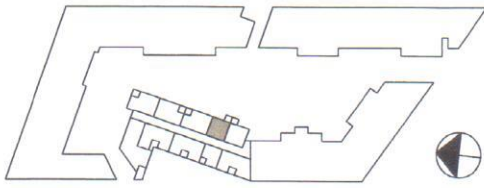


KOTIKORTTELI KALASATAMA

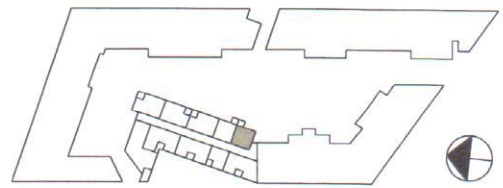
2H+KK+PARVEKE 35 m²



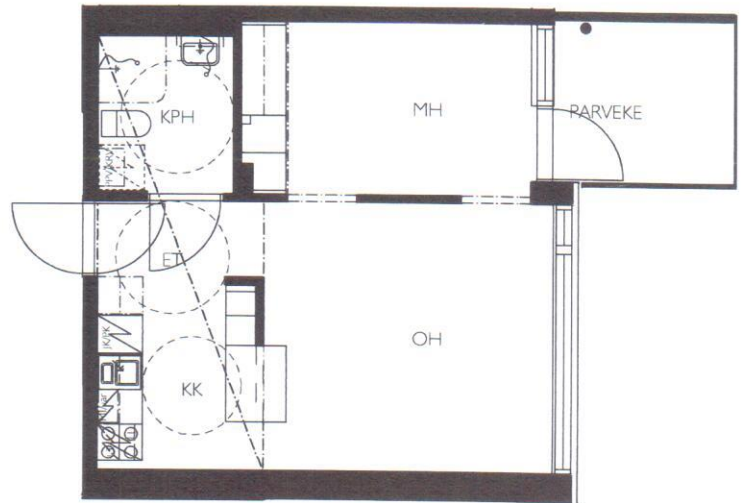
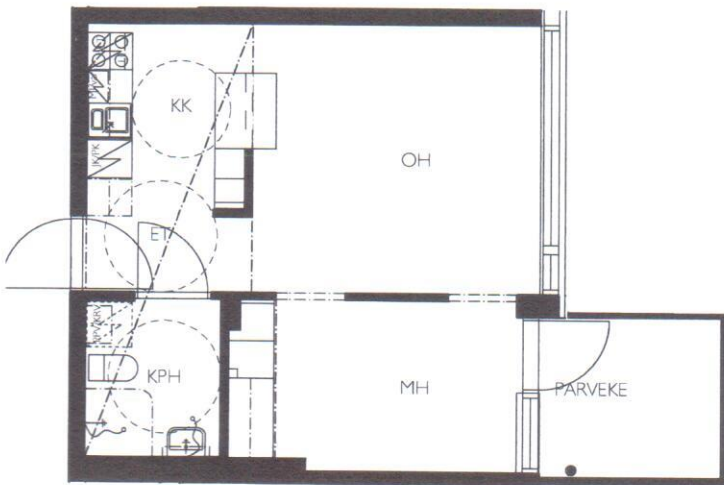
06.03.2012



ASUNNOT: B 079, 3. KERROS
 B 089, 4. KERROS
 B 099, 5. KERROS
 B 109, 6. KERROS



ASUNNOT: B 078, 3. KERROS
 B 088, 4. KERROS
 B 098, 5. KERROS
 B 108, 6. KERROS

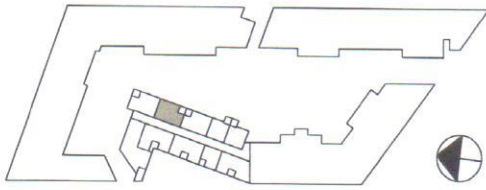


KOTIKORTTELI KALASATAMA

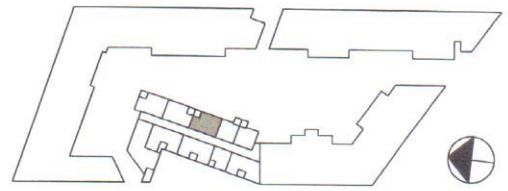
2H+KK+PARVEKE 35 m²



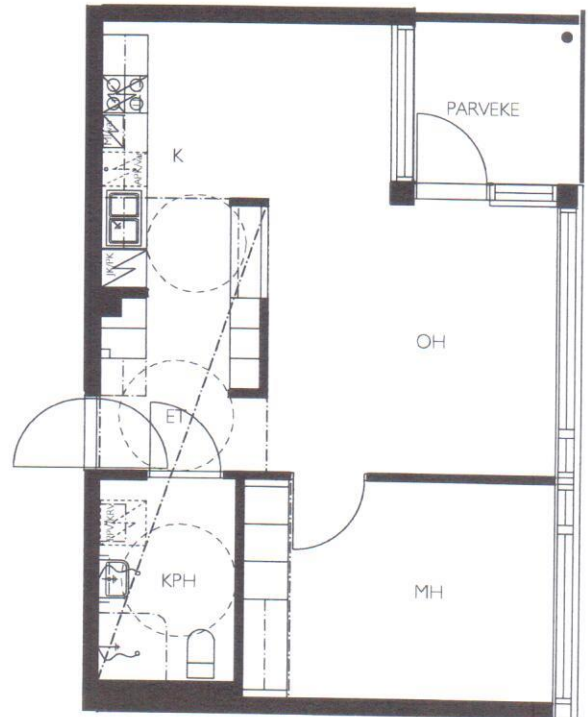
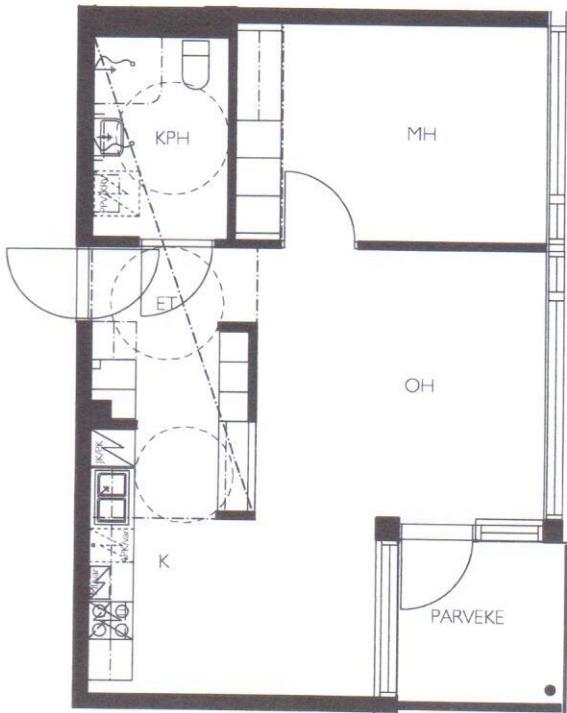
06.03.2012



ASUNNOT: B 081, 3. KERROS
 B 091, 4. KERROS
 B 101, 5. KERROS
 B 111, 6. KERROS



ASUNNOT: B 080, 3. KERROS
 B 090, 4. KERROS
 B 100, 5. KERROS
 B 110, 6. KERROS

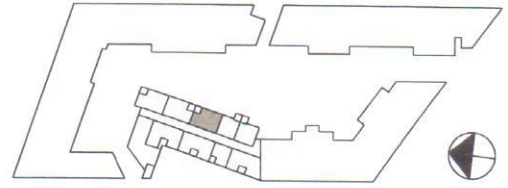
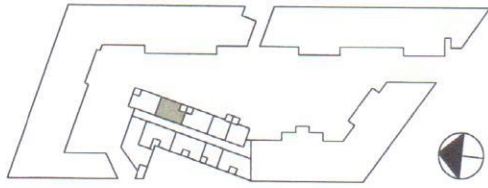


KOTIKORTTELI KALASATAMA

2H+K+PARVEKE 48.5 m²

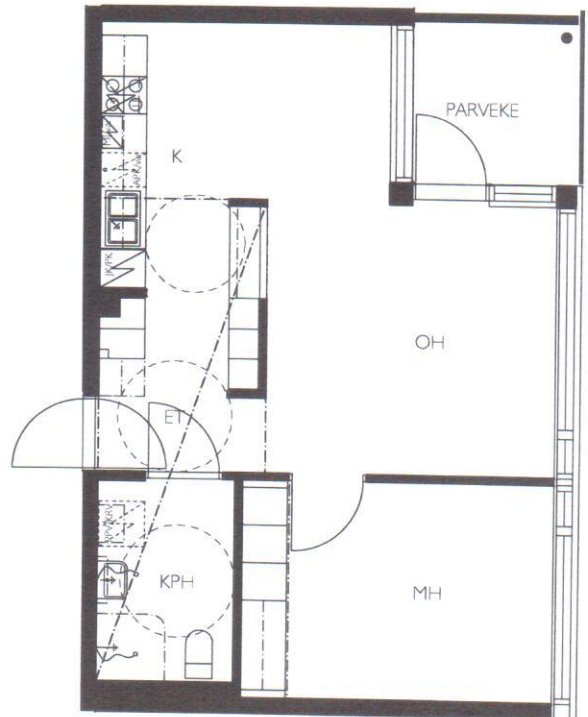
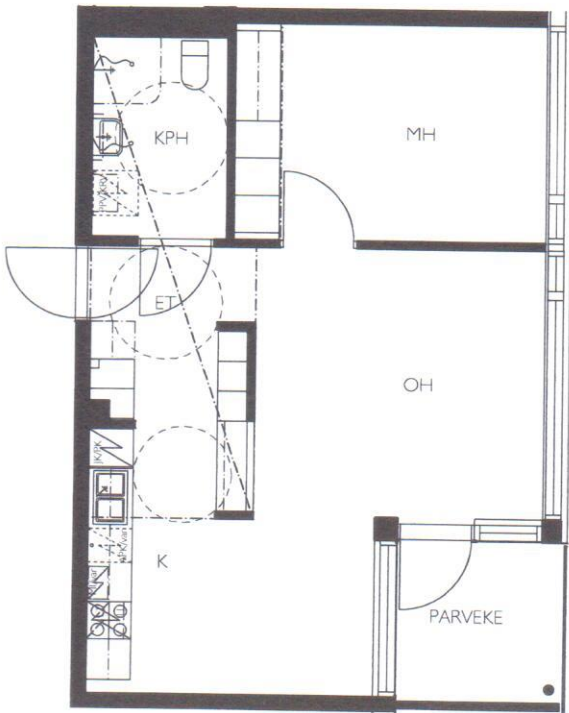


06.03.2012



ASUNNOT: B 081, 3. KERROS
 B 091, 4. KERROS
 B 101, 5. KERROS
 B 111, 6. KERROS

ASUNNOT: B 080, 3. KERROS
 B 090, 4. KERROS
 B 100, 5. KERROS
 B 110, 6. KERROS



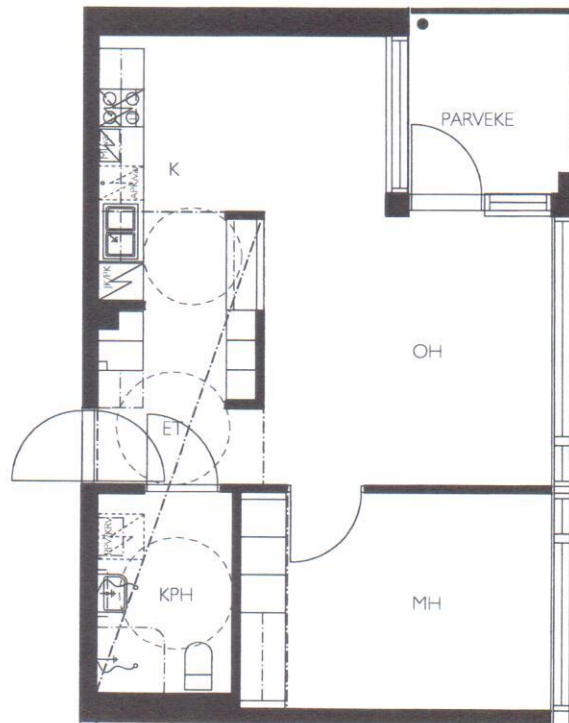
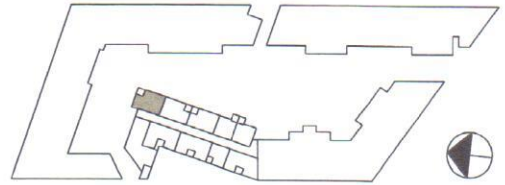
KOTIKORTTELI KALASATAMA

2H+K+PARVEKE 48.5 m²

06.03.2012



ASUNNOT: B 082, 3. KERROS
 B 092, 4. KERROS
 B 102, 5. KERROS
 B 112, 6. KERROS



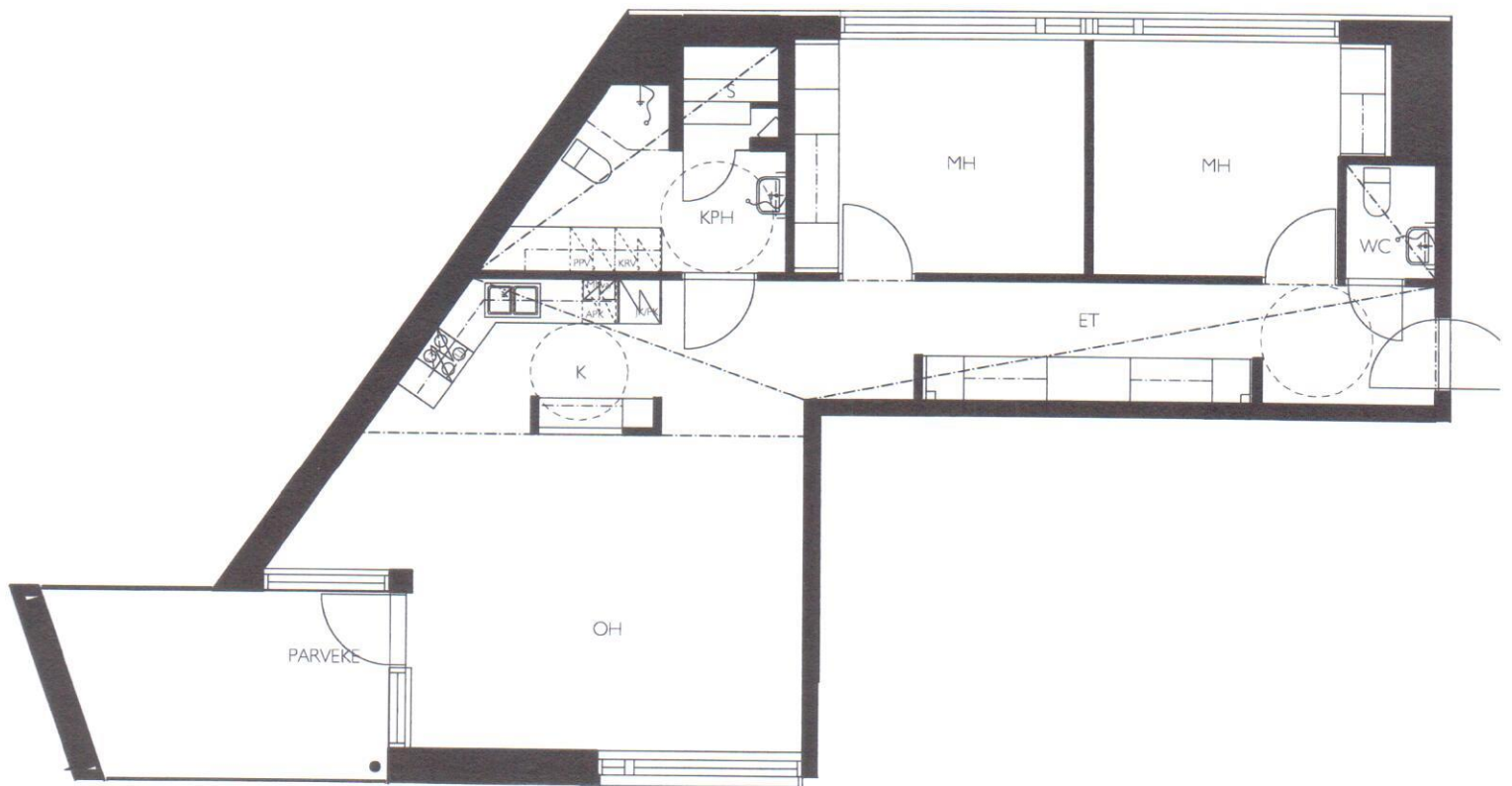
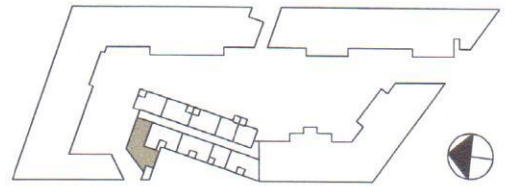
KOTIKORTTELI KALASATAMA

2H+K+PARVEKE 48.5 m²

06.03.2012



ASUNNOT: B 073, 2. KERROS
 B 083, 3. KERROS
 B 093, 4. KERROS
 B 103, 5. KERROS
 B 113, 6. KERROS

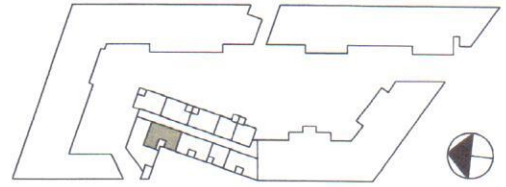


KOTIKORTTELI KALASATAMA

3H+K+S+PARVEKE 86 m²

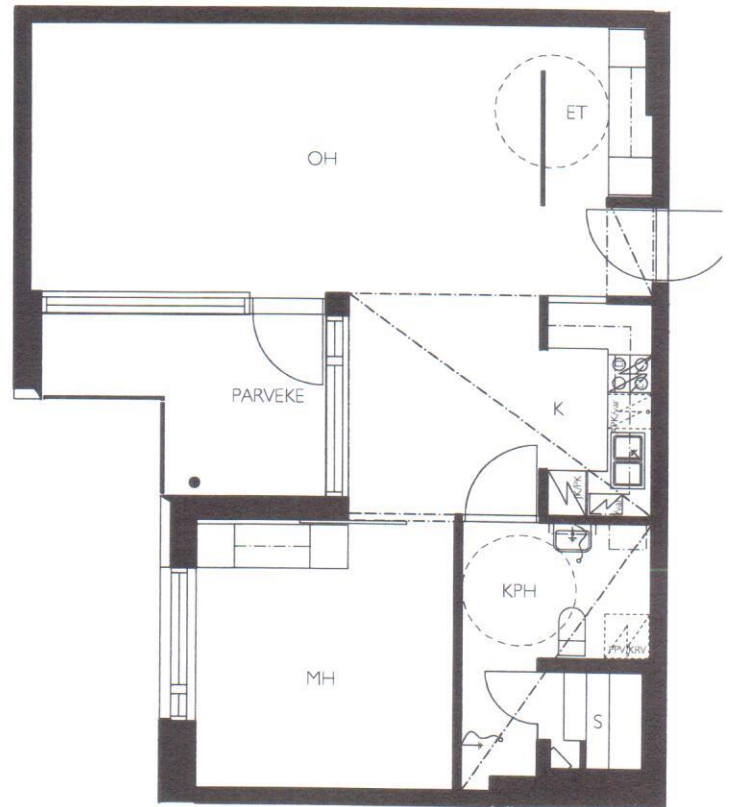
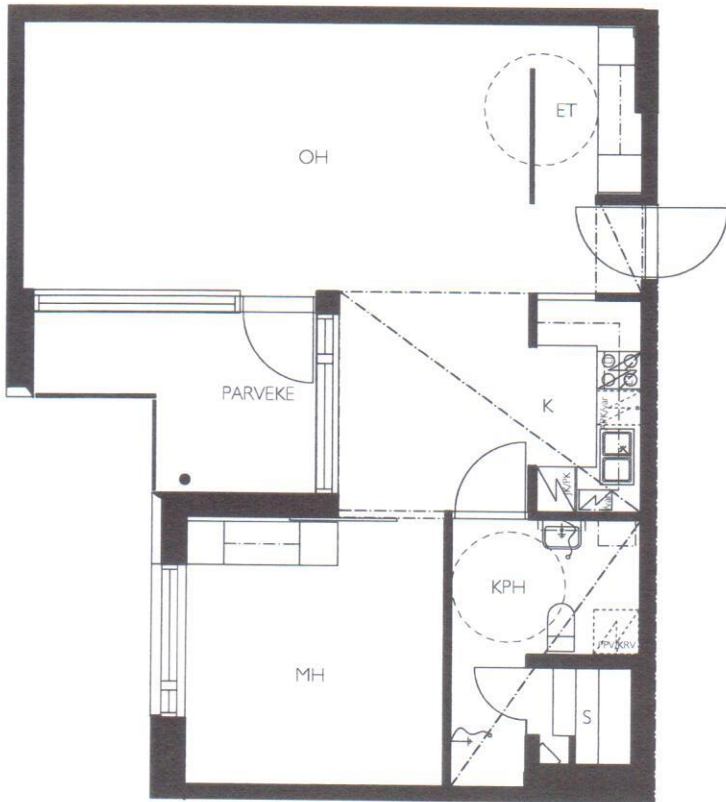


06.03.2012



ASUNNOT: B 084, 3. KERROS
B 094, 4. KERROS

ASUNNOT: B 104, 5. KERROS
B 114, 6. KERROS



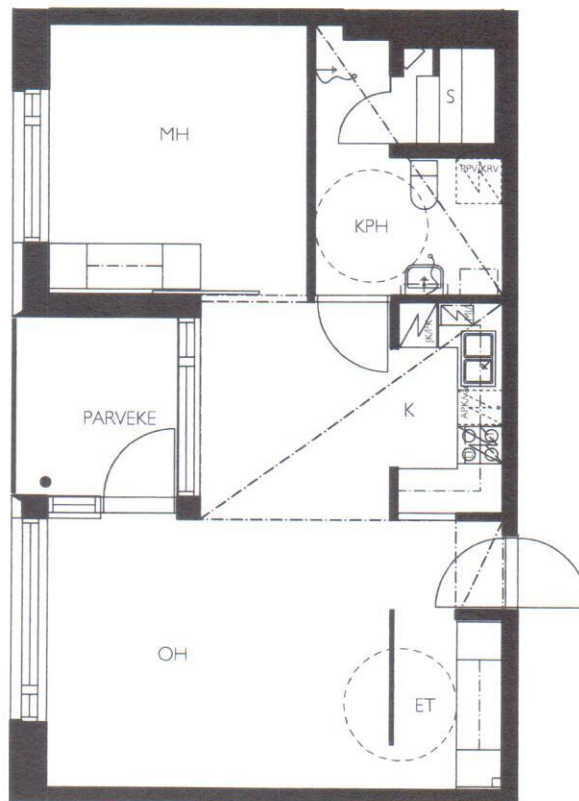
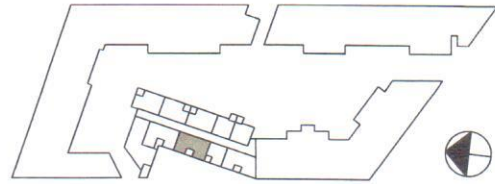
KOTIKORTTELI KALASATAMA

2H+K+S+PARVEKE 62.5 m²

06.03.2012



ASUNNOT: B 105, 5. KERROS
B 115, 6. KERROS



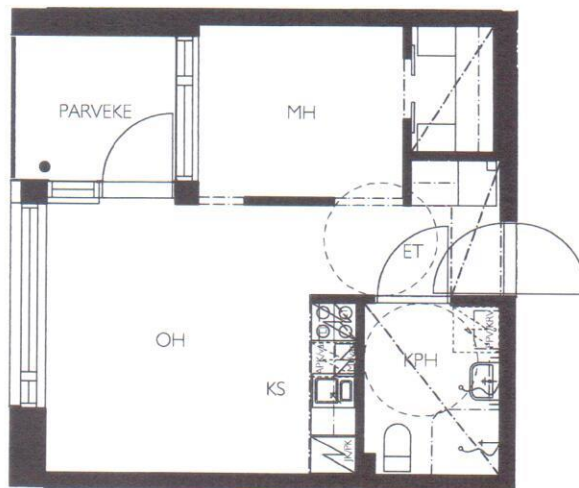
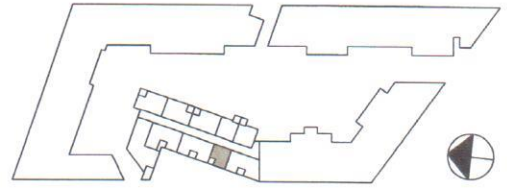
KOTIKORTTELI KALASATAMA

2H+K+S+PARVEKE 55 m²

06.03.2012



ASUNNOT: B 076, 2. KERROS
 B 086, 3. KERROS
 B 096, 4. KERROS
 B 106, 5. KERROS
 B 116, 6. KERROS



KOTIKORTTELI KALASATAMA

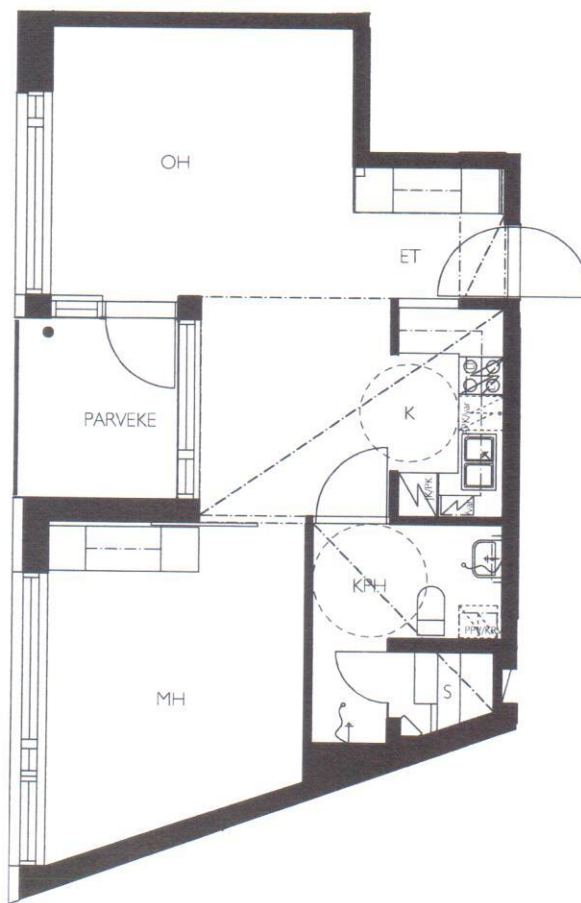
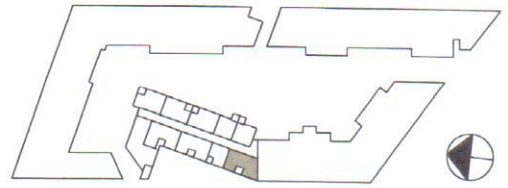
2H+KS+PARVEKE 31 m²



06.03.2012



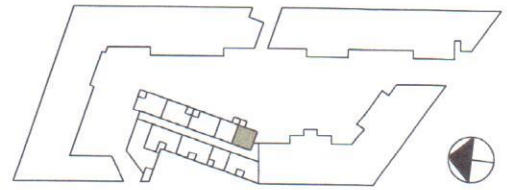
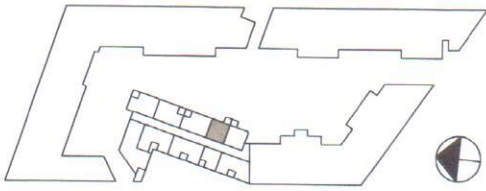
ASUNNOT: B 077, 2. KERROS
 B 087, 3. KERROS
 B 097, 4. KERROS
 B 107, 5. KERROS
 B 117, 6. KERROS



KOTIKORTTELI KALASATAMA

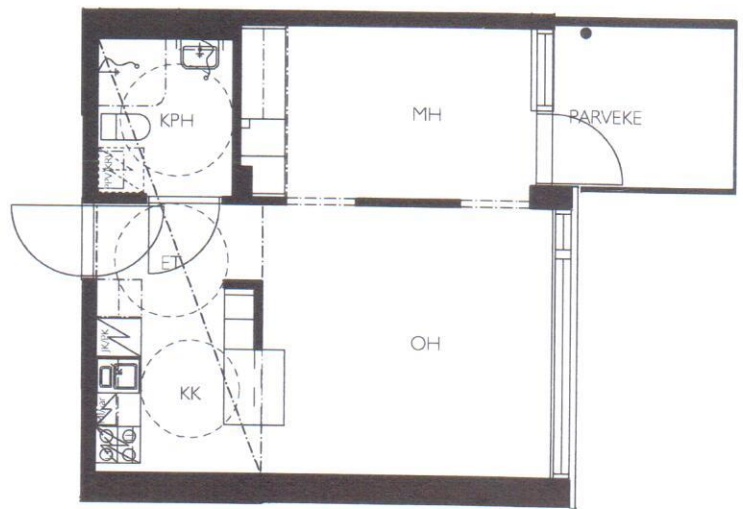
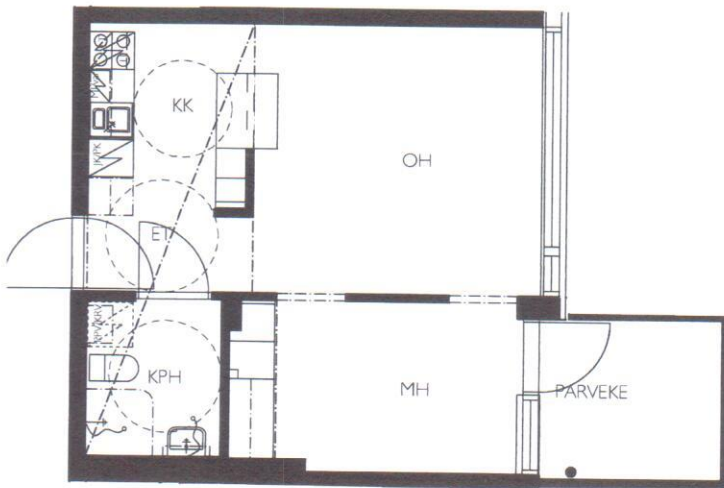
2H+K+S+PARVEKE 51.5 m²

06.03.2012



ASUNNOT: B 079, 3. KERROS
 B 089, 4. KERROS
 B 099, 5. KERROS
 B 109, 6. KERROS

ASUNNOT: B 078, 3. KERROS
 B 088, 4. KERROS
 B 098, 5. KERROS
 B 108, 6. KERROS

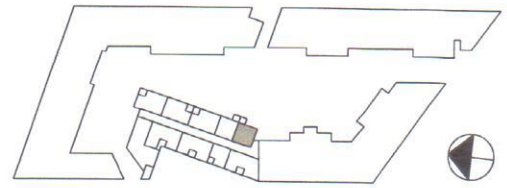
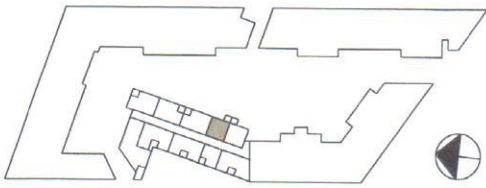


KOTIKORTTELI KALASATAMA

2H+KK+PARVEKE 35 m²

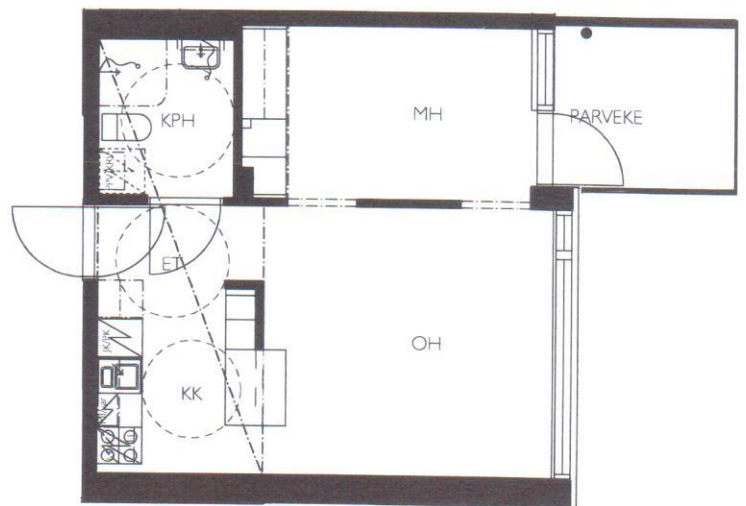
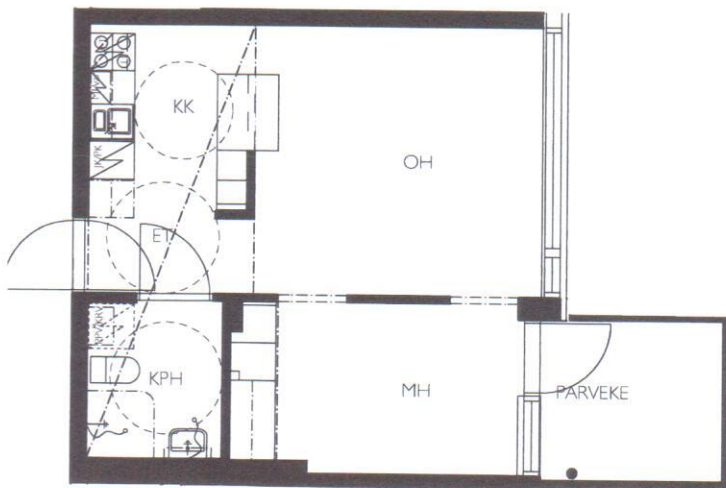


06.03.2012



ASUNNOT: B 079, 3. KERROS
 B 089, 4. KERROS
 B 099, 5. KERROS
 B 109, 6. KERROS

ASUNNOT: B 078, 3. KERROS
 B 088, 4. KERROS
 B 098, 5. KERROS
 B 108, 6. KERROS

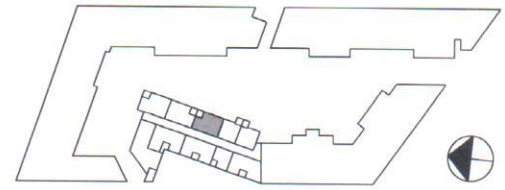
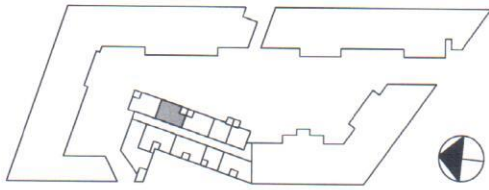


KOTIKORTTELI KALASATAMA

2H+KK+PARVEKE 35 m²

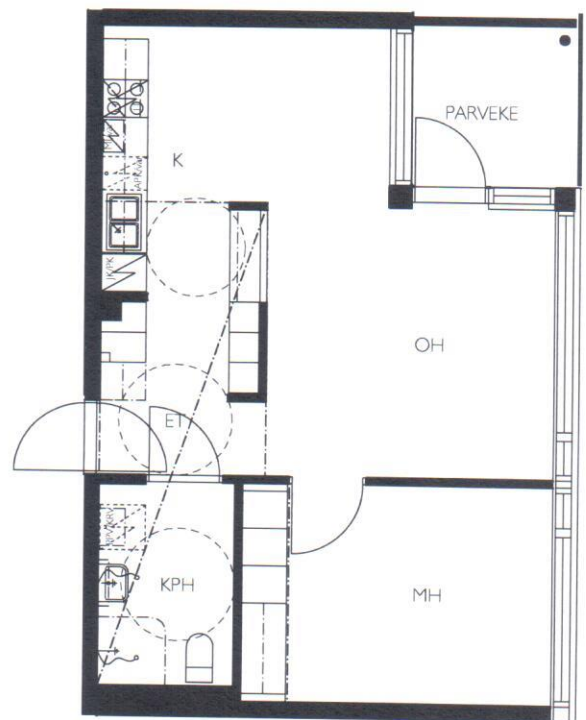
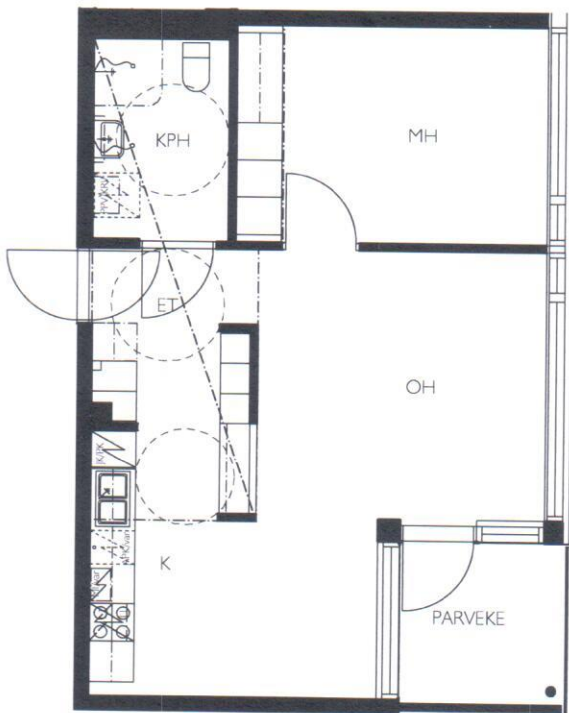


06.03.2012



ASUNNOT: B 081, 3. KERROS
 B 091, 4. KERROS
 B 101, 5. KERROS
 B 111, 6. KERROS

ASUNNOT: B 080, 3. KERROS
 B 090, 4. KERROS
 B 100, 5. KERROS
 B 110, 6. KERROS

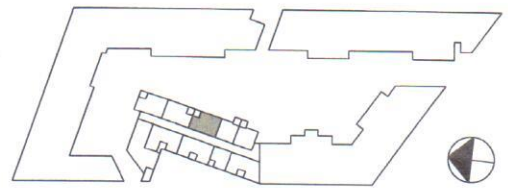
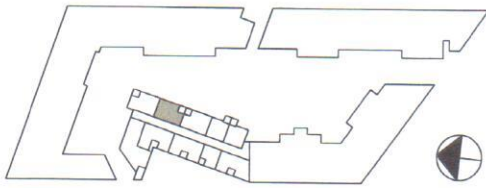


KOTIKORTTELI KALASATAMA

2H+K+PARVEKE 48.5 m²

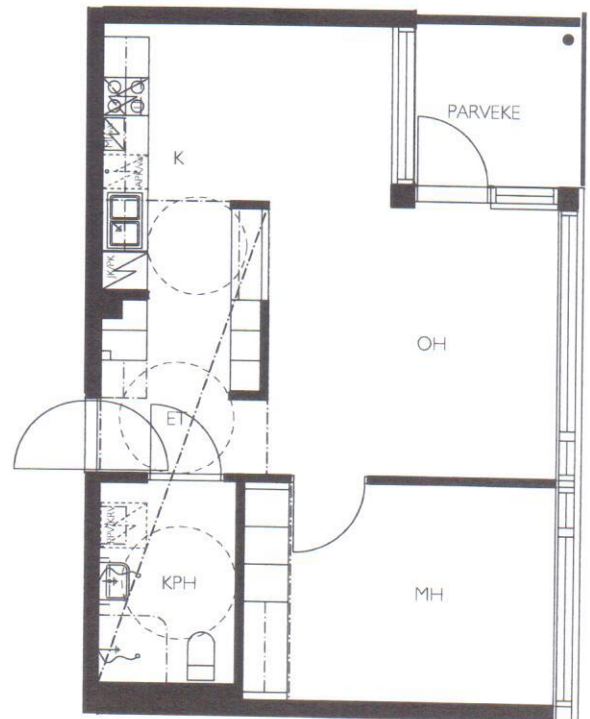
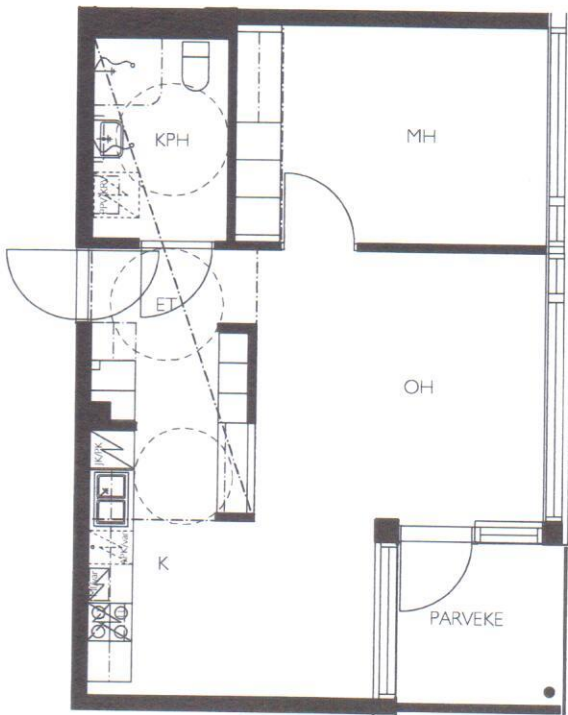


06.03.2012



ASUNNOT: B 081, 3. KERROS
 B 091, 4. KERROS
 B 101, 5. KERROS
 B 111, 6. KERROS

ASUNNOT: B 080, 3. KERROS
 B 090, 4. KERROS
 B 100, 5. KERROS
 B 110, 6. KERROS



KOTIKORTTELI KALASATAMA

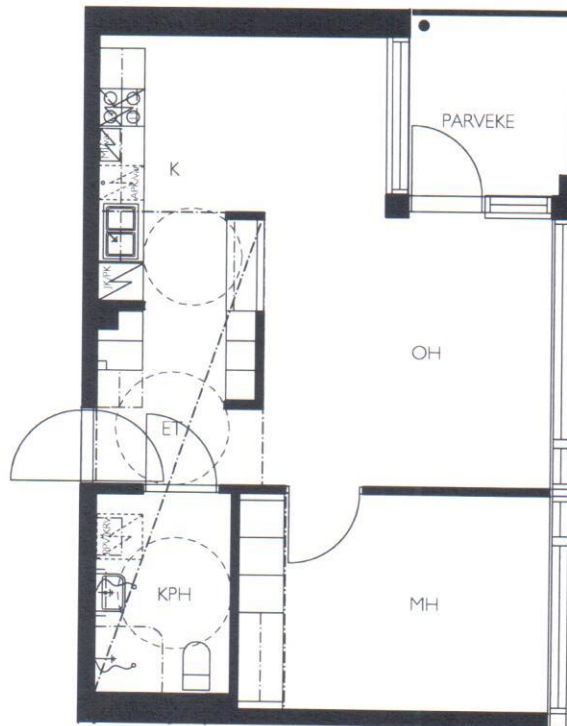
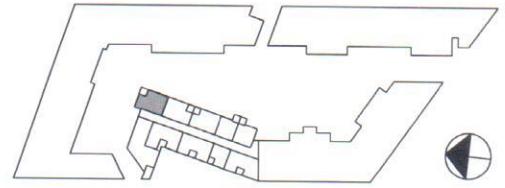
2H+K+PARVEKE 48.5 m²



06.03.2012



ASUNNOT: B 082, 3. KERROS
 B 092, 4. KERROS
 B 102, 5. KERROS
 B 112, 6. KERROS



KOTIKORTTELI KALASATAMA

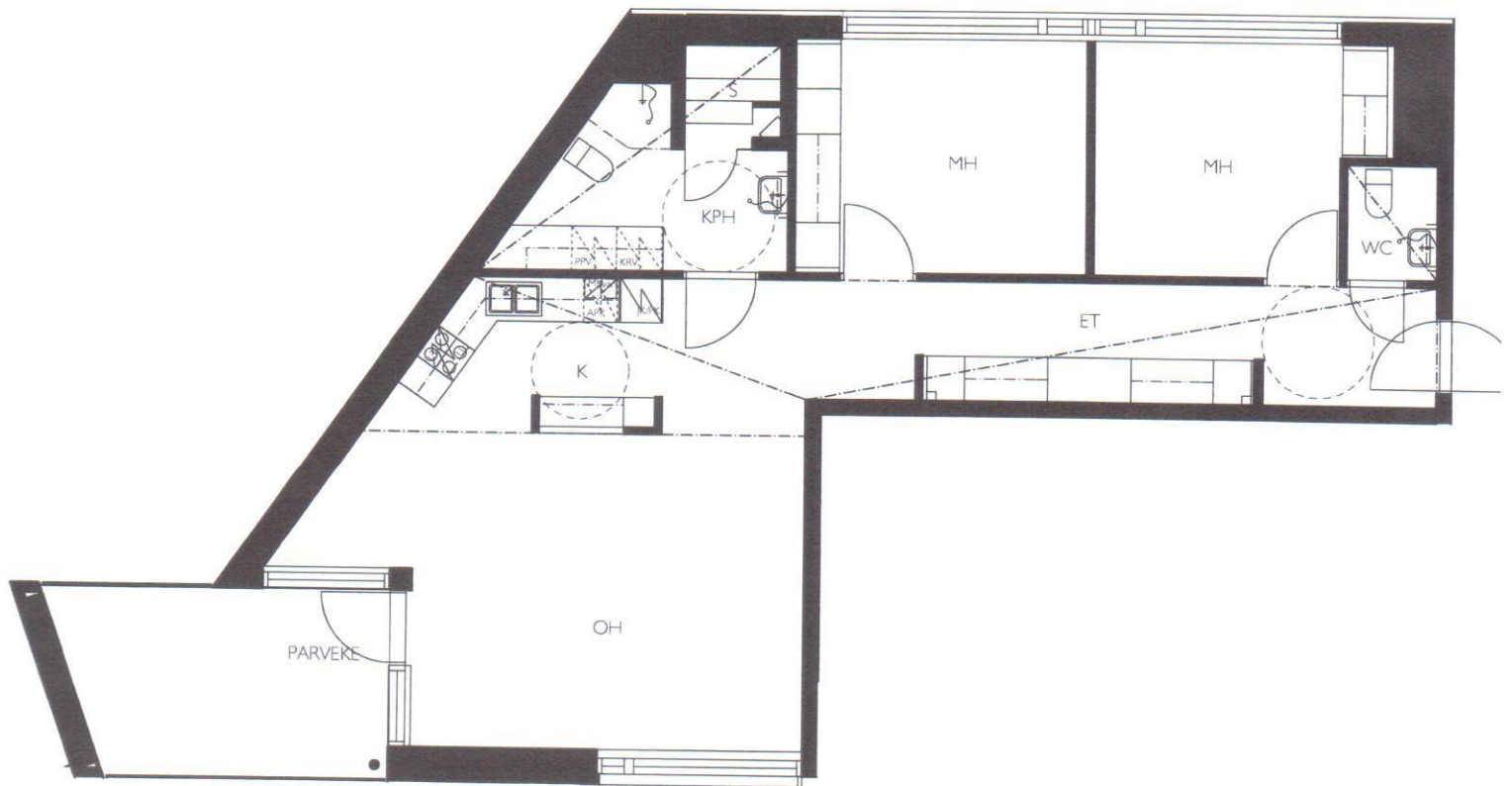
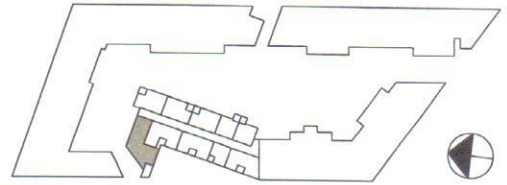
2H+K+PARVEKE 48.5 m²



06.03.2012



ASUNNOT: B 073, 2. KERROS
 B 083, 3. KERROS
 B 093, 4. KERROS
 B 103, 5. KERROS
 B 113, 6. KERROS

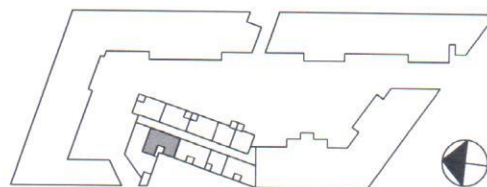


KOTIKORTTELI KALASATAMA

3H+K+S+PARVEKE 86 m²

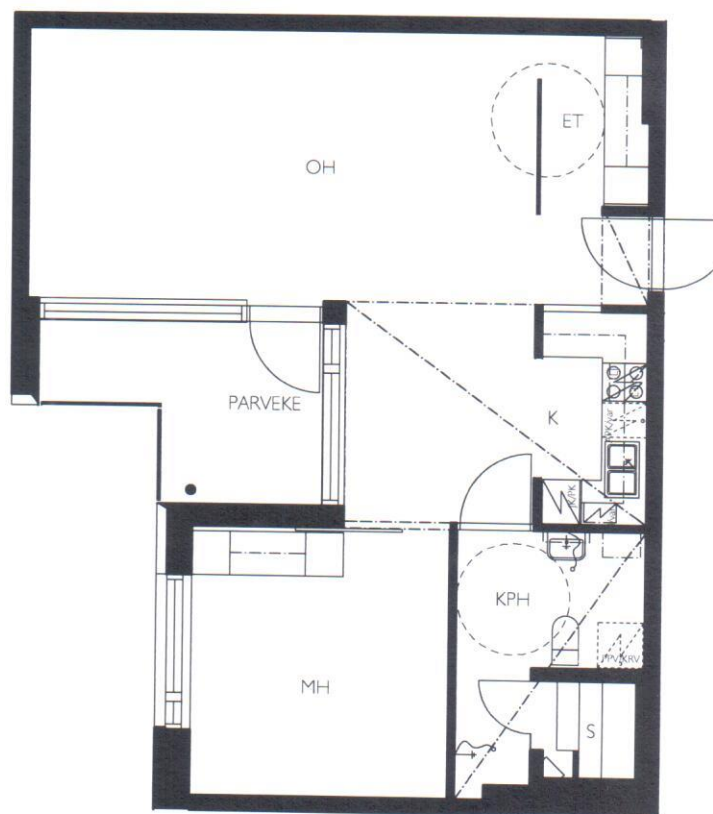
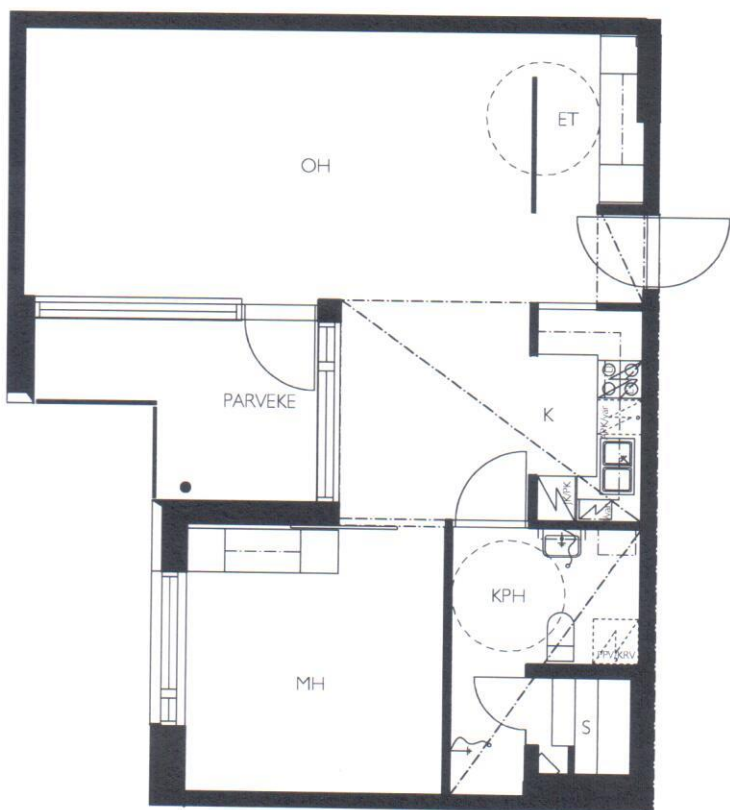


06.03.2012



ASUNNOT: B 084, 3. KERROS
B 094, 4. KERROS

ASUNNOT: B 104, 5. KERROS
B 114, 6. KERROS



KOTIKORTTELI KALASATAMA

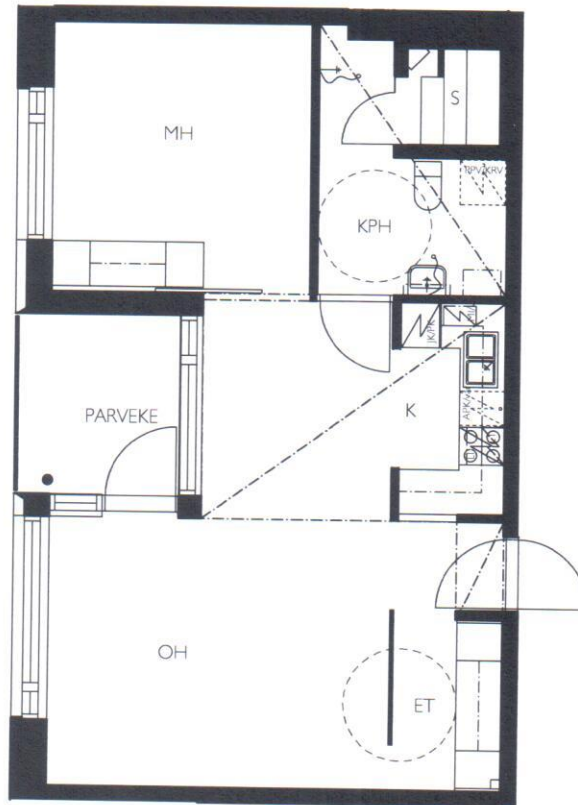
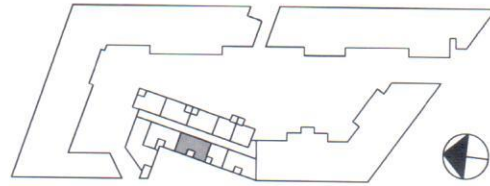
2H+K+S+PARVEKE 62.5 m²



06.03.2012



ASUNNOT: B 105, 5. KERROS
B 115, 6. KERROS



KOTIKORTTELI KALASATAMA

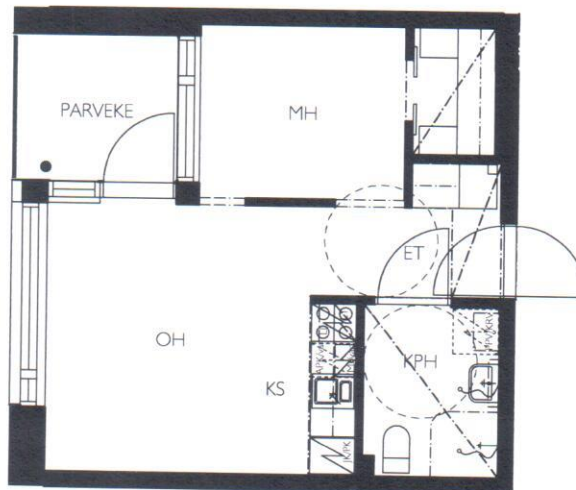
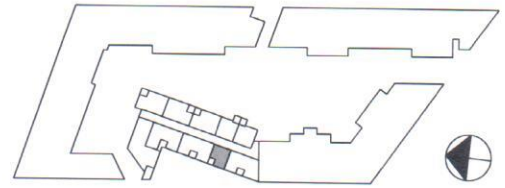
2H+K+S+PARVEKE 55 m²



06.03.2012



- ASUNNOT: B 076, 2. KERROS
 B 086, 3. KERROS
 B 096, 4. KERROS
 B 106, 5. KERROS
 B 116, 6. KERROS



KOTIKORTTELI KALASATAMA

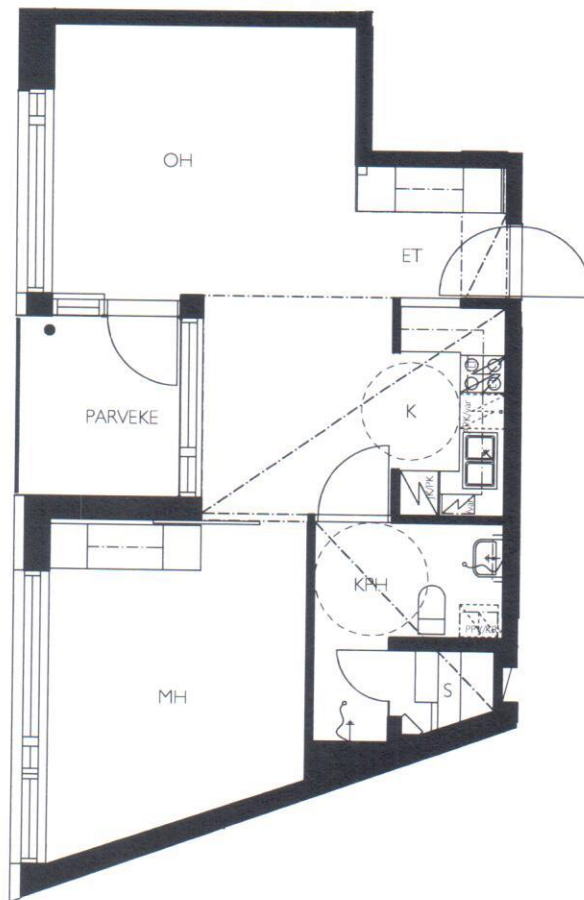
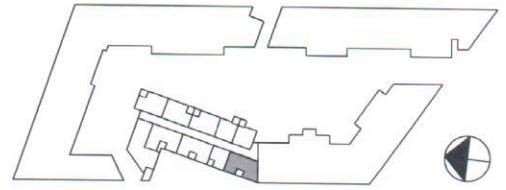
2H+KS+PARVEKE 31 m²



06.03.2012



ASUNNOT: B 077, 2. KERROS
 B 087, 3. KERROS
 B 097, 4. KERROS
 B 107, 5. KERROS
 B 117, 6. KERROS



KOTIKORTTELI KALASATAMA

2H+K+S+PARVEKE 51.5 m²



06.03.2012